

Photo Ref.

- 1** Size 11" Borg Warner
 Hub 2 Eared Hub
 Pilot .750" OD
 Mounting 6 Mounting Nuts
 Stator Splines 29
 Turbine Splines 17



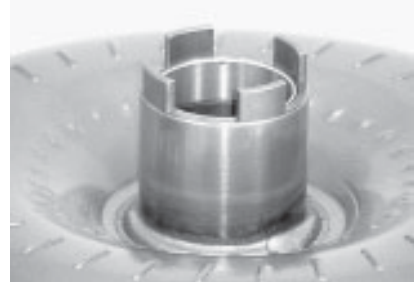
Comment: Code letters: ND, NO, RR, RP, NH, JC, JV, LX; Also available with cooling shroud.

- 2** Size 11" Borg Warner
 Hub 4 Eared Hub W/Bushing
 Pilot .750" OD
 Mounting 6 Mounting Nuts
 Stator Splines 19
 Turbine Splines 15



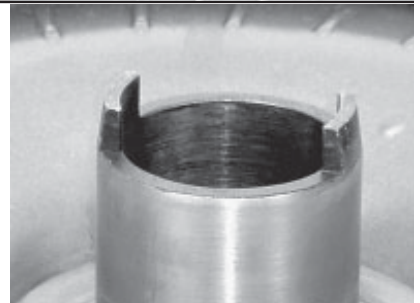
Comment: Code Letters: KY, HU, FV, RW, KX, FW, HP, RU, KM, PB, RV

- 3** Size 11" Borg Warner
 Hub 4 Eared Hub W/Bushing
 Pilot .750" OD
 Mounting 6 Mounting Straps
 Stator Splines 19
 Turbine Splines 15



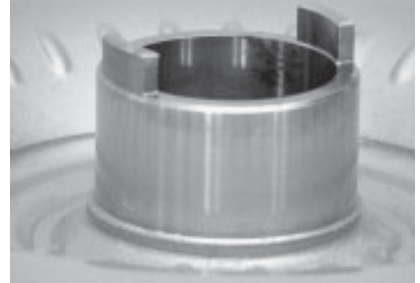
Comment: Code Letters: EG, ET, FC, FD, FF, KF, FE, KZ, RX

- 4** Size 11" Borg Warner
 Hub 2 Eared Hub
 Pilot .750" OD
 Mounting 6 Mounting Nuts
 Stator Splines 29
 Turbine Splines 17



Comment: Code Letters: FP, ME, MZ, RB, RF, BB, DG, DA, PY, LK, RE, NG, PZ

- 5** Size 13" Borg Warner
 Hub 2 Eared Hub
 Pilot 1.703" OD x .50" L
 Mounting 6 Mounting Nuts
 Stator Splines 22
 Turbine Splines 18



Comment: Color Code: 2 blue and 1 green stripe or 2 blue and 1 brown stripe

New Torque Converters may be available. Contact your JI Rep. for price & availability.

Photo Reference Section is for use in identification of Converters and does not imply that Converters with similar Reference Numbers are identical.

Toll Free USA & Canada: 800-321-9983, Mexico: 001-800-561-1897 Fax: 330/342-3895 www.joseph.com

All manufacturers' names, numbers, symbols and descriptions are used for reference purpose only,
 and it is not implied that any part listed is the product of the manufacturer.

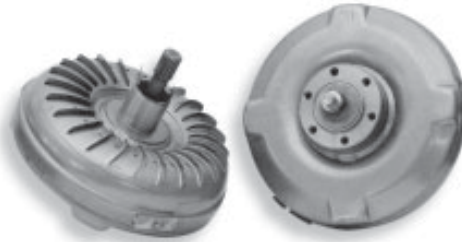
Copyright 2005, Joseph Industries, Inc.

Remanufactured Torque Converters



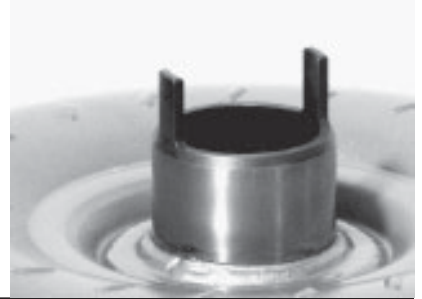
Photo Ref.

- 6 Size 11" Daikin
Hub 2 Eared Hub
Pilot .589" OD x .650" L
Mounting 6 Threaded Holes
Stator Splines 19
Turbine Splines 18



Comment: No dowel pins at drive plate mounting

- 7 Size 11" Mazda
Hub 2 Eared Hub
Pilot .589" OD x .58" L
Mounting 6 Threaded Holes
Stator Splines 19
Turbine Splines 14



- 8 Size 13" Borg Warner
Hub Splined Hub
Pilot 1.701" OD
Mounting 3 Mounting Pads
Stator Splines 19
Turbine Splines 15



Comment: Color Codes: 2 black and 1 brown stripe or 2 yellow and 1 orange stripe

- 9 Size 11.5" Borg Warner
Hub Splined Hub
Pilot 2.044" OD hollow
Mounting 6 Mounting Nuts
Stator Splines 19
Turbine Splines 20



Comment: Code letters: UH, WH, UK, VY

- 10 Size 12.5" Sachs
Hub Smooth Hub W/ 36 Splines in I.D.
Pilot 1.571" OD x .68" L
Mounting 4 Mounting Pads
Stator Splines 22
Turbine Splines 26



Comment: 181001 stamped on bottom cover - 147000 stamped on impeller cover

New Torque Converters may be available. Contact your JI Rep. for price & availability.

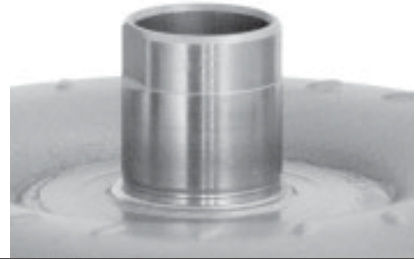
Photo Reference Section is for use in identification of Converters and does not imply that Converters with similar Reference Numbers are identical.

Toll Free USA & Canada: 800-321-9983, Mexico: 001-800-561-1897 Fax: 330/342-3895 www.joseph.com

All manufacturers' names, numbers, symbols and descriptions are used for reference purpose only, and it is not implied that any part listed is the product of the manufacturer.

Photo Ref.

- 11** Size 10.5" Mazda
 Hub 2 Flats on Hub
 Pilot .589" OD x .60"L
 Mounting 6 Threaded Holes
 Stator Splines 30
 Turbine Splines 14



Comment: Drive Plate Mounting Holes at 60 degree interval

- 12** Size 12.5" Sachs
 Hub Smooth Hub W/Seal Ring Groove
 Pilot 1.572" OD x 1.045"
 Mounting 4 Mounting Pads
 Stator Splines 46
 Turbine Splines 30



Comment: 040508 or 040401 stamped on bottom cover - 057003 or 050000 stamped on impeller cover

- 13** Size 13" Borg Warner
 Hub Slotted Hub
 Pilot 1.702" OD
 Mounting 6 Mounting Pads
 Stator Splines 27
 Turbine Splines 30



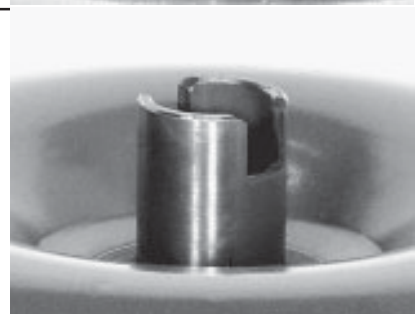
Comment: Color code: 1 green stripe and 1 white stripe or 1 purple stripe and one white stripe. Allison application

- 14** Chrysler
 Hub Smooth Hub W/Bushing in I.D.
 Pilot 1.812" OD
 Mounting 4 Mounting Pads
 Stator Splines 27
 Turbine Splines 19



Comment: Unit may have cooling fins

- 15** Chrysler
 Hub Slotted Hub
 Pilot 1.812" OD
 Mounting 4 Mounting Pads
 Stator Splines 29
 Turbine Splines 27



Comment: Also available with 122 tooth ring gear

New Torque Converters may be available. Contact your JI Rep. for price & availability.

Photo Reference Section is for use in identification of Converters and does not imply that Converters with similar Reference Numbers are identical.

Toll Free USA & Canada: 800-321-9983, Mexico: 001-800-561-1897 Fax: 330/342-3895 www.joseph.com

All manufacturers' names, numbers, symbols and descriptions are used for reference purpose only, and it is not implied that any part listed is the product of the manufacturer.

Copyright 2005, Joseph Industries, Inc.

Remanufactured Torque Converters



Photo Ref.

- 16 Size 11" Borg Warner
Hub Smooth Hub W/25 Splines in I.D.
Pilot .750" OD
Mounting 6 Mounting Nuts
Stator Splines 29
Turbine Splines 29



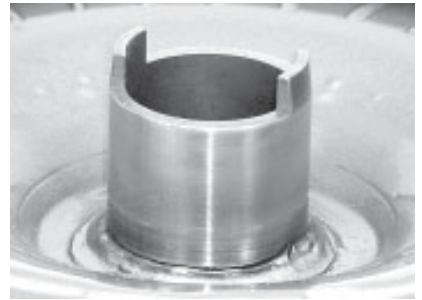
Comment: Code Letters: SP, VN, SJ, VE

- 17 Chrysler
Hub Slotted Hub
Pilot 1.812" OD
Mounting 4 Mounting Pads
Stator Splines 27
Turbine Splines 24



Comment: 130 tooth ring gear

- 18 Size 11" Borg Warner
Hub 2 Eared Hub
Pilot .750" OD
Mounting 6 Mounting Nuts
Stator Splines 29
Turbine Splines 17

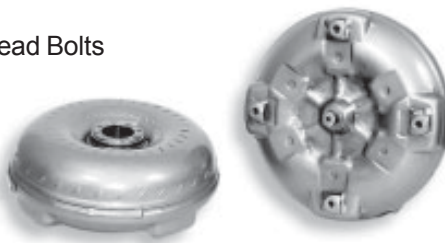


Comment: Code Letters: GC, HC, KS, RO, G, GZ; Also available with cooling shroud.

- 19 Ford
Hub 2 Eared Hub
Pilot 1.375" OD
Mounting 4 Studs
Stator Splines 29
Turbine Splines 29



- 20 Size 11" Borg Warner
Hub Removable Geared Hub W/8 Allen Head Bolts
Pilot .787" OD
Mounting 4 Square Mounting Nuts
Stator Splines 19
Turbine Splines 15



Comment: Code Letters: TC

New Torque Converters may be available. Contact your JI Rep. for price & availability.

Photo Reference Section is for use in identification of Converters and does not imply that Converters with similar Reference Numbers are identical.

Toll Free USA & Canada: 800-321-9983, Mexico: 001-800-561-1897 Fax: 330/342-3895 www.joseph.com

All manufacturers' names, numbers, symbols and descriptions are used for reference purpose only, and it is not implied that any part listed is the product of the manufacturer.

Photo Ref.

- 21** Chrysler
 Hub Smooth Hub W/Bushing in I.D.
 Pilot 1.812" OD
 Mounting 4 Mounting Pads
 Stator Splines 27
 Turbine Splines 19



Comment: Large body unit - 130 tooth x .5" thick ring gear

- 22** Chrysler
 Hub Smooth Hub W/Bushing in I.D.
 Pilot 1.812" OD
 Mounting 4 Mounting Pads
 Stator Splines 27
 Turbine Splines 19



Comment: Small body unit - 130 tooth x 1" thick ring gear

- 23** Size 11" Borg Warner
 Hub Removable Geared Hub W/8 Allen Head Bolts
 Pilot .750" OD
 Mounting 4 Thick Square Mounting Nuts
 Stator Splines 29
 Turbine Splines 15



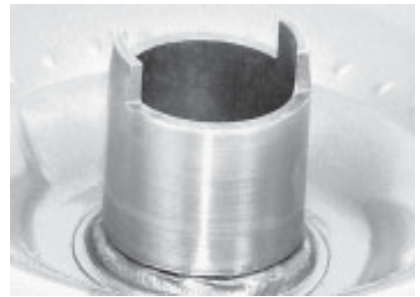
Comment: Code Letters: SX

- 24** Size 11" Borg Warner
 Hub 2 Eared Hub
 Pilot .750" OD
 Mounting 6 Mounting Nuts
 Stator Splines 29
 Turbine Splines 17



Comment: Code Letters: NU, NT, OP, RM, RK, PP, OO, RL, ST, PC, RS, SS

- 25** Size 11" Borg Warner or 11" Sachs
 Hub 2 Eared Hub
 Pilot .750" OD
 Mounting 6 Thick Mounting Nuts
 Stator Splines 29
 Turbine Splines 17



Comment: Code Letters Borg Warner: KG, PW, SL, SR, SK
 Code Numbers Sachs: 314002 top/187002 bottom or 314001 top / 187001 bottom

New Torque Converters may be available. Contact your JI Rep. for price & availability.

Photo Reference Section is for use in identification of Converters and does not imply that Converters with similar Reference Numbers are identical.

Toll Free USA & Canada: 800-321-9983, Mexico: 001-800-561-1897 Fax: 330/342-3895 www.joseph.com

All manufacturers' names, numbers, symbols and descriptions are used for reference purpose only,
 and it is not implied that any part listed is the product of the manufacturer.

Copyright 2005, Joseph Industries, Inc.

Remanufactured Torque Converters



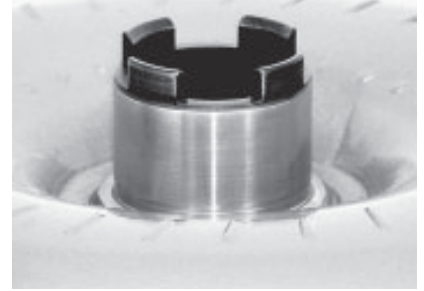
Photo Ref.

- 26 Size 11" Borg Warner
Hub 4 Eared Thin Hub
Pilot .750" OD
Mounting 6 Mounting Straps
Stator Splines 19
Turbine Splines 19



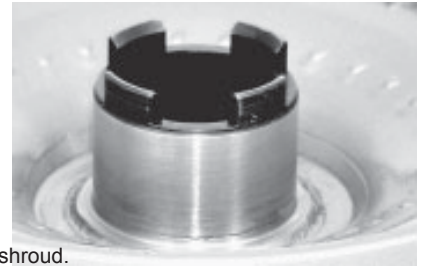
Comment: CODE Letters: DJ, AE, F, PR, AD, EC, G, GF; Also available with cooling shroud.

- 27 Size 11" Borg Warner
Hub 4 Eared Hub
Pilot .750" OD
Mounting 6 Mounting Nuts
Stator Splines 19
Turbine Splines 19



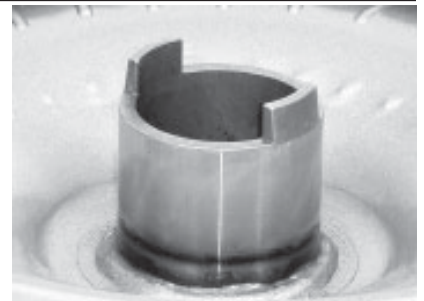
Comment: Code letters: GC, HM, PV, GD, HL, OS, NM, SE, NL, PF, RT, LR

- 28 Size 11" Borg Warner
Hub 4 Eared Hub
Pilot .750" OD
Mounting 6 Mounting Nuts
Stator Splines 19
Turbine Splines 19



Comment: Code Letters: GE, GW, JH, LC, NJ, NV, OA, OV, PN, PU, PJ, SH, PV, GB, HN, JT, PH, KW, FU, PO, PL, PW, MD, NK, LP, PK; Also available with cooling shroud.

- 29 Size 11" Borg Warner
Hub 2 Eared Hub
Pilot .750" OD
Mounting 6 Mounting Nuts
Stator Splines 29
Turbine Splines 29



Comment: Code Letters: FY, HW, RA, RN, PM, HA, HK, KU, PM, LA, RZ;
Also available with cooling shroud.

- 30 Ford
Hub 2 Flats on hub
Pilot 1.375" OD
Mounting 4 Studs
Stator Splines 32
Turbine Splines 29



Comment: May have dimples on impeller cover

New Torque Converters may be available. Contact your JI Rep. for price & availability.

Photo Reference Section is for use in identification of Converters and does not imply that Converters with similar Reference Numbers are identical.

Toll Free USA & Canada: 800-321-9983, Mexico: 001-800-561-1897 Fax: 330/342-3895 www.joseph.com

All manufacturers' names, numbers, symbols and descriptions are used for reference purpose only,
and it is not implied that any part listed is the product of the manufacturer.

Copyright 2005, Joseph Industries, Inc.

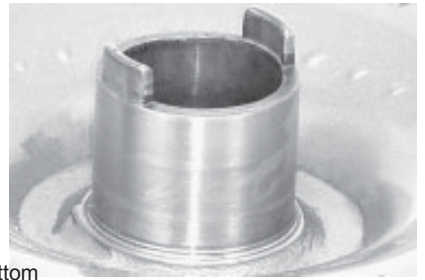
Photo Ref.

- 31** Ford
 Hub 2 Flats on hub
 Pilot 1.375" OD
 Mounting 4 Studs
 Stator Splines 32
 Turbine Splines 29



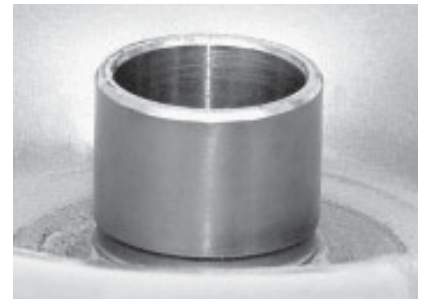
Comment: May have dimples on impeller cover

- 32** Size 11" Borg Warner or 11" Sachs
 Hub 2 Eared Hub
 Pilot .750" OD
 Mounting 6 Mounting Nuts
 Stator Splines 29
 Turbine Splines 29



Comment: Code Letters Borg Warner: NT, RM, SF, PX,
 NH, KU, HG, HA, RN, PG, RO, LB, NS, RD, SR, SN, TG, MA, MG, OR, TF, SD, RC, SJ
 Code Numbers Sachs: 113001 top / 11500 bottom, 10100 top/10700 bottom, 311001 top / 187001 bottom

- 33** Chrysler / Yale
 Hub Straight Hub
 Pilot 1.812" OD
 Mounting 4 Mounting Pads
 Stator Splines 27



Comment: 122 Tooth Ring Gear

- 34** Chrysler
 Hub Smooth Hub
 Pilot None
 Mounting 8 Studs
 Stator Splines 27
 Turbine Splines 19



Comment: 146 tooth ring gear - may have cooling fins

- 35** Size 11" Borg Warner
 Hub Removable Geared Hub W/8 Allen Head Bolts
 Pilot .750" OD
 Mounting 6 Square Mounting Nuts
 Stator Splines 29
 Turbine Splines 15



Comment: Code Letters: SM

New Torque Converters may be available. Contact your JI Rep. for price & availability.

Photo Reference Section is for use in identification of Converters and does not imply that Converters with similar Reference Numbers are identical.

Toll Free USA & Canada: 800-321-9983, Mexico: 001-800-561-1897 Fax: 330/342-3895 www.joseph.com

All manufacturers' names, numbers, symbols and descriptions are used for reference purpose only,
 and it is not implied that any part listed is the product of the manufacturer.

Copyright 2005, Joseph Industries, Inc.

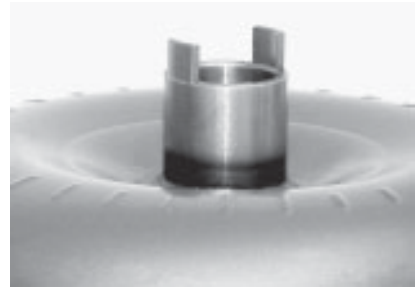
Remanufactured Torque Converters



Photo Ref.

36

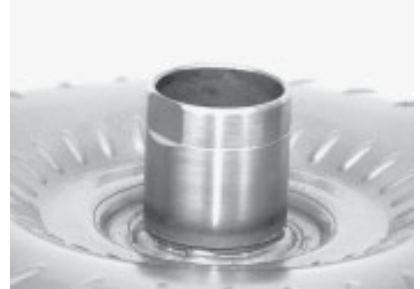
Hub 2 Eared Hub
Pilot .750" OD
Mounting Long Round Nuts
Stator Splines 24



Comment: 68 Stamped on Bottom

37

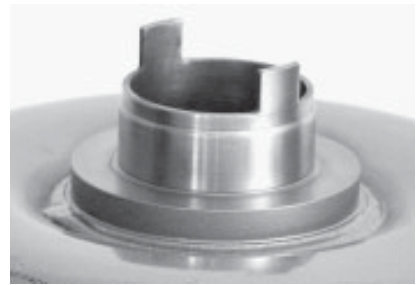
Ford
Hub 2 Flats on hub
Pilot 1.375" OD
Mounting 4 Studs
Stator Splines 32
Turbine Splines 29



Comment: May have dimples on impeller cover

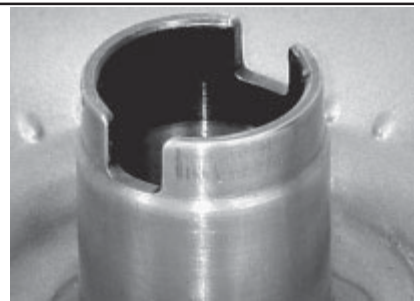
38

Size 12" Komatsu
Hub 2 Eared Hub
Pilot Removable type
Mounting 6 Threaded Holes
Stator Splines 18
Turbine Splines 16



39

Size 11" Sachs
Hub Slotted Hub
Pilot 1.181" & 1.148" OD
Mounting 4 Mounting Pads
Stator Splines 38
Turbine Splines 27



Comment: 081003 stamped on the bottom cover

40

Size 11" Mazda
Hub 2 Eared Hub
Pilot .589" OD x .58"L
Mounting 6 Threaded Holes
Stator Splines 19
Turbine Splines 20



Comment: Code Letters: EH, DH, EK, DK, ET, EG

New Torque Converters may be available. Contact your JI Rep. for price & availability.

Photo Reference Section is for use in identification of Converters and does not imply that Converters with similar Reference Numbers are identical.

Toll Free USA & Canada: 800-321-9983, Mexico: 001-800-561-1897 Fax: 330/342-3895 www.joseph.com

All manufacturers' names, numbers, symbols and descriptions are used for reference purpose only, and it is not implied that any part listed is the product of the manufacturer.

Copyright 2005, Joseph Industries, Inc.

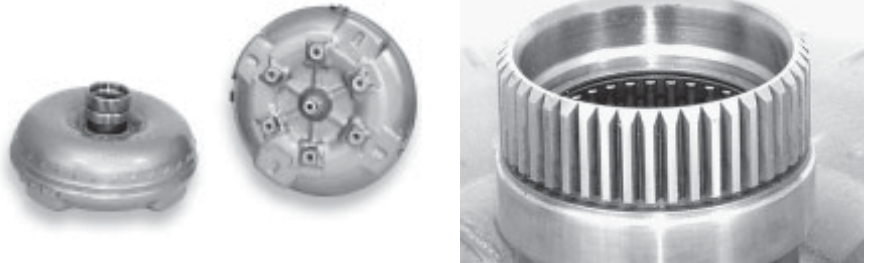
Photo Ref.

- 41** Size 13" Borg Warner
 Hub Smooth Hub W/25 Splines in I.D.
 Pilot 1.700" OD
 Mounting 6 Mounting Nuts
 Stator Splines 20
 Turbine Splines 29



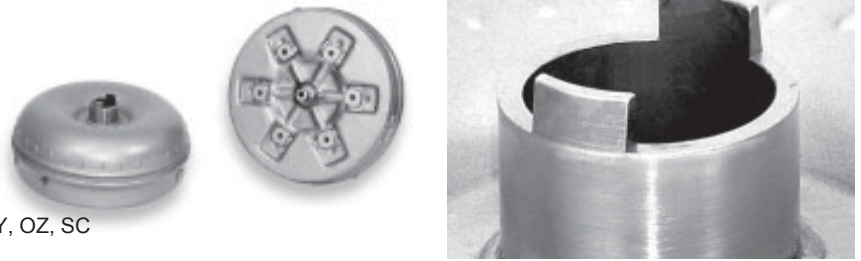
Comment: Available in lockup and non-lockup models. Specify color codes

- 42** Size 11" Borg Warner
 Hub Splined Hub
 Pilot .750" OD
 Mounting 6 Mounting Nuts
 Stator Splines 29
 Turbine Splines 29



Comment: Code Letters: TD, TS, TJ, TA, TN

- 43** Size 11" Borg Warner
 Hub 2 Eared Hub
 Pilot .750" OD
 Mounting 6 Mounting Nuts
 Stator Splines 29
 Turbine Splines 29



Comment: Code Letters: VB, PD, OY, DY, SB, PA, SY, OZ, SC

- 44** Size 11" Daikin
 Hub Geared Hub
 Pilot .589" OD
 Mounting 6 Threaded Holes
 Stator Splines 19
 Turbine Splines 18



Comment: Cooling Fins on Converter

- 45** Size 13" Daikin
 Hub 2 Eared Hub
 Pilot .787" OD
 Mounting 6 Threaded Holes
 Stator Splines 16
 Turbine Splines 16



Comment: 2 dowel pins at drive plate mounting

New Torque Converters may be available. Contact your JI Rep. for price & availability.

Photo Reference Section is for use in identification of Converters and does not imply that Converters with similar Reference Numbers are identical.

Toll Free USA & Canada: 800-321-9983, Mexico: 001-800-561-1897 Fax: 330/342-3895 www.joseph.com

All manufacturers' names, numbers, symbols and descriptions are used for reference purpose only,
 and it is not implied that any part listed is the product of the manufacturer.

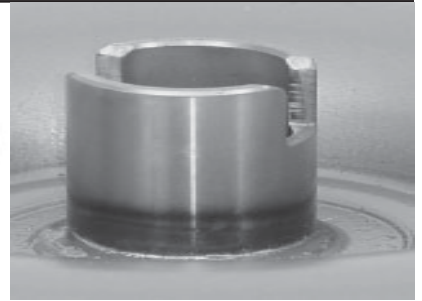
Copyright 2005, Joseph Industries, Inc.

Remanufactured Torque Converters



Photo Ref.

- 46 Chrysler
Hub Slotted Hub
Pilot 1.812" OD
Mounting 4 Mounting Pads
Stator Splines 29
Turbine Splines 27

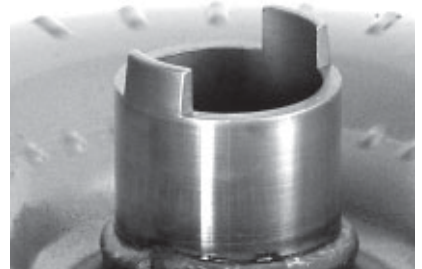


Comment: 122 tooth ring gear

- 47 Size 11" Daikin
Hub Geared Hub
Pilot 5.89" OD x .650"L
Mounting 6 Threaded Holes
Stator Splines 19
Turbine Splines 14



- 48 Size 11" Sachs or 12" Sachs
Hub 2 Eared Hub
Pilot .787" OD or 1.177" OD x 1.19"
Mounting 4 Mounting Tabs
Stator Splines 19 or 22
Turbine Splines 29



Comment: 11" Sachs - 063103 stamped on bottom cover;
12" Sachs - 046405 stamped on bottom cover - 046407 stamped on impeller cover

- 49 Size 13" Daikin
Hub Geared Hub
Pilot .982" OD x 1.10" L
Mounting 6 Threaded Holes
Stator Splines 18
Turbine Splines 19



NO PHOTO AVAILABLE

Comment: 2 dowel pins at drive plate mounting

- 50 Size 12.5" Sachs
Hub 2 Eared Hub
Pilot .787" OD x .500" L
Mounting 4 Mounting Pads
Stator Splines 21
Turbine Splines 19



Comment: 110001 stamped on bottom cover

New Torque Converters may be available. Contact your JI Rep. for price & availability.

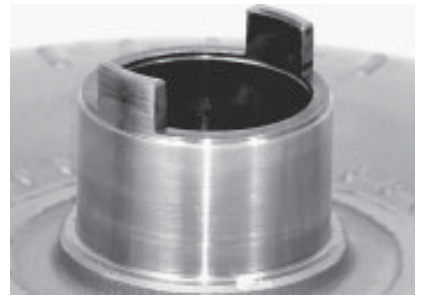
Photo Reference Section is for use in identification of Converters and does not imply that Converters with similar Reference Numbers are identical.

Toll Free USA & Canada: 800-321-9983, Mexico: 001-800-561-1897 Fax: 330/342-3895 www.joseph.com

All manufacturers' names, numbers, symbols and descriptions are used for reference purpose only,
and it is not implied that any part listed is the product of the manufacturer.

Photo Ref.

- 51** Size 11.5" Sachs
 Hub 2 Eared Hub
 Pilot .787" OD x .500"L
 Mounting 4 Mounting Tabs
 Stator Splines 21
 Turbine Splines 19



Comment: 111001 or 111002 stamped on bottom cover

- 52** Size 11" Komatsu
 Hub 2 Eared Hub
 Pilot Removable type
 Mounting 8 Threaded Holes
 Stator Splines 18
 Turbine Splines 18



Comment: Can have 4, 2 or 0 dowel pins at drive plate mounting

- 53** Size 11" Mazda
 Hub 2 Eared Hub
 Pilot .589" OD x .90"L
 Mounting 6 Threaded Holes
 Stator Splines 19
 Turbine Splines 20



Comment: Code Letters: DM, DU, DX

- 54** Size 13" Mazda
 Hub Geared Hub
 Pilot See Comment
 Mounting 6 Threaded Holes
 Stator Splines 18
 Turbine Splines 19



Comment: 3 models - pilot OD .750 or .589 - has 4 dowel pins

- 55** Size 11" Borg Warner
 Hub Splined Hub
 Pilot .787" OD
 Mounting 4 Mounting Nuts
 Stator Splines 19
 Turbine Splines 20



Comment: Code Letters: TK

New Torque Converters may be available. Contact your JI Rep. for price & availability.

Photo Reference Section is for use in identification of Converters and does not imply that Converters with similar Reference Numbers are identical.

Toll Free USA & Canada: 800-321-9983, Mexico: 001-800-561-1897 Fax: 330/342-3895 www.joseph.com

All manufacturers' names, numbers, symbols and descriptions are used for reference purpose only,
 and it is not implied that any part listed is the product of the manufacturer.

Copyright 2005, Joseph Industries, Inc.

Remanufactured Torque Converters



Photo Ref.

- 56 Size 11" Mazda
Hub 2 Eared Hub
Pilot .589" OD x .60"L
Mounting 4 Round Nuts
Stator Splines 19
Turbine Splines 20



Comment: Code Letters: QE

- 57 Size 13" Daikin
Hub Geared Hub
Pilot .787" OD x 1.770 L
Mounting 8 Threaded Holes
Stator Splines Bottom 20 Top 31
Turbine Splines 19



Comment: Dual Stator Unit

- 58 Size 11" Daikin
Hub 2 Eared Hub
Pilot .589" OD x .635" L
Mounting 6 Threaded Holes
Stator Splines 19
Turbine Splines 18



Comment: Could have cooling fins

- 59 Size 13" Daikin
Hub 2 Ear
Pilot .787" OD x 1.50" L
Mounting 6 Threaded Holes
Stator Splines 18
Turbine Splines 13



Comment: Fits early style F03 series cushion tire truck

- 60 Size 11" Mazda
Hub 2 Eared Hub
Pilot .589" OD x .58"L
Mounting 6 Threaded Holes
Stator Splines 19
Turbine Splines 14



Comment: Code Letters: P or T with 4 digits.

New Torque Converters may be available. Contact your JI Rep. for price & availability.

Photo Reference Section is for use in identification of Converters and does not imply that Converters with similar Reference Numbers are identical.

Toll Free USA & Canada: 800-321-9983, Mexico: 001-800-561-1897 Fax: 330/342-3895 www.joseph.com

All manufacturers' names, numbers, symbols and descriptions are used for reference purpose only,
and it is not implied that any part listed is the product of the manufacturer.

Copyright 2005, Joseph Industries, Inc.

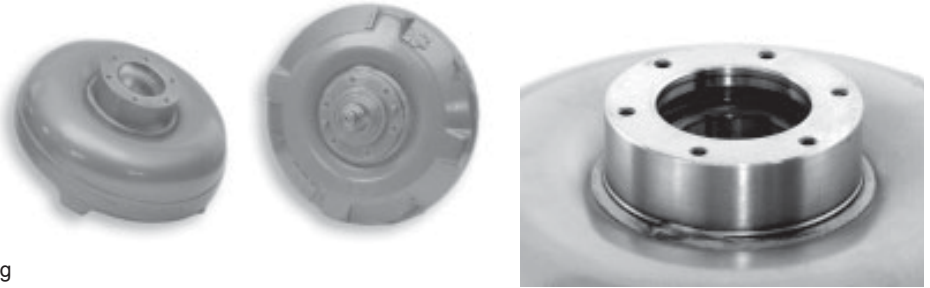
Photo Ref.

- 61** Size 12" Borg Warner
 Hub 2 Eared Hub
 Pilot .787" OD
 Mounting 6 Mounting Nuts
 Stator Splines 21
 Turbine Splines 19



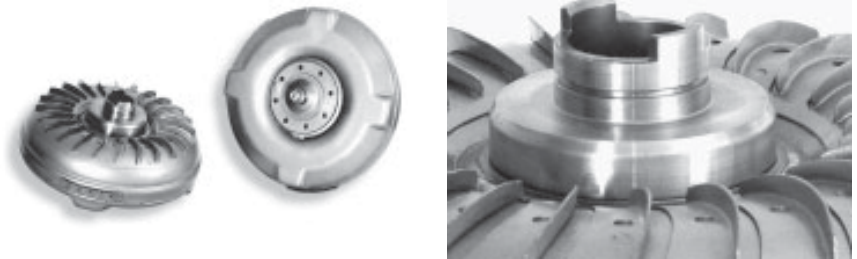
Comment: Color coded: 1 pink stripe and 1 purple stripe

- 62** Size 13" Daikin
 Hub Removable Hub
 Pilot .982" OD x .982"L
 Mounting 6 Threaded Holes
 Stator Splines 18
 Turbine Splines 19



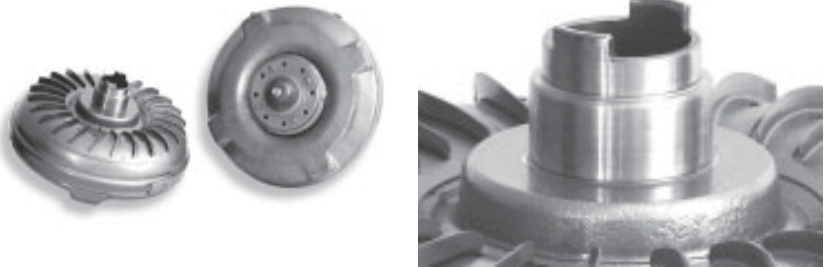
Comment: 2 dowel pins at drive plate mounting

- 63** Size 11" Daikin
 Hub 2 Eared Hub
 Pilot .589" OD x .600"L
 Mounting 8 Threaded Holes
 Stator Splines 18
 Turbine Splines 14



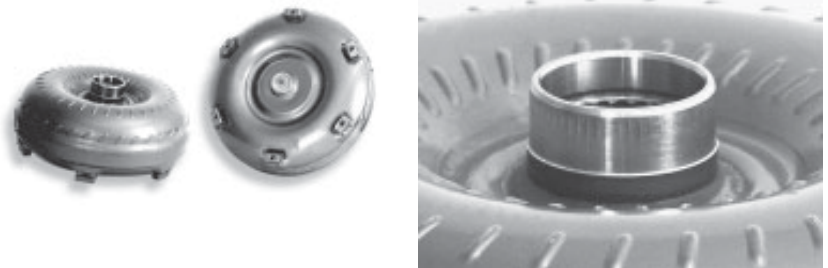
Comment: No dowel pins at drive plate mounting

- 64** Size 11" Daikin
 Hub 2 Eared Hub
 Pilot .589" OD x .580" L
 Mounting 8 Threaded Holes
 Stator Splines 18
 Turbine Splines 14



Comment: 4 dowel pins at drive plate mounting

- 65** Size 13" Borg Warner
 Hub Smooth Hub W/25 Splines in I.D.
 Pilot 1.702" OD
 Mounting 6 Mounting Pads
 Stator Splines 24
 Turbine Splines 24



Comment: Color Code: 2 black stripes

New Torque Converters may be available. Contact your JI Rep. for price & availability.

Photo Reference Section is for use in identification of Converters and does not imply that Converters with similar Reference Numbers are identical.

Toll Free USA & Canada: 800-321-9983, Mexico: 001-800-561-1897 Fax: 330/342-3895 www.joseph.com

All manufacturers' names, numbers, symbols and descriptions are used for reference purpose only,
 and it is not implied that any part listed is the product of the manufacturer.

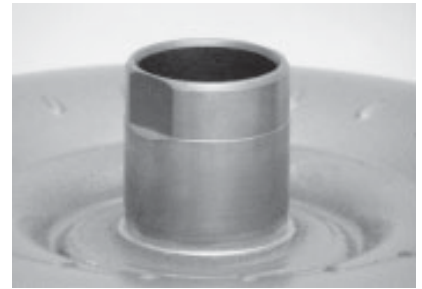
Copyright 2005, Joseph Industries, Inc.

Remanufactured Torque Converters



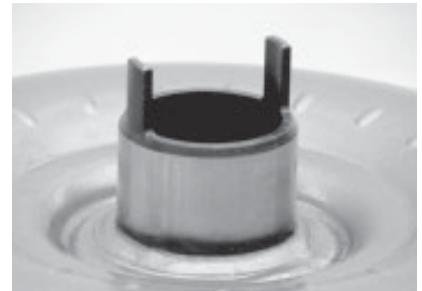
Photo Ref.

- 66 Size 11" Daikin
Hub 2 Flats on Hub
Pilot .787" OD x .660" L
Mounting 6 Threaded Holes
Stator Splines 30
Turbine Splines 14



Comment: Fits J and K series single speed transmissions

- 67 Size 11" Mazda
Hub 2 Eared Hub
Pilot .589" OD x .588" L
Mounting 6 Threaded Holes
Stator Splines 19
Turbine Splines 14



Comment: Code Letter: M

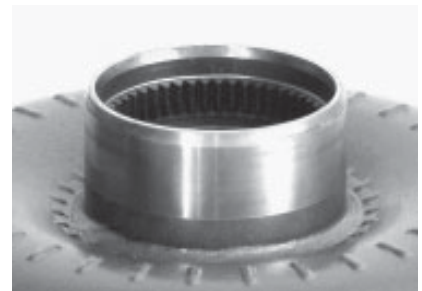
- 68 Size 13" Borg Warner
Hub Slotted Hub
Pilot 1.700" OD
Mounting 6 Mounting Pads
Stator Splines 24
Turbine Splines 30



- 69 Size 11" Komatsu
Hub 2 Flats on Hub
Pilot Removable type
Mounting 8 Threaded Holes
Stator Splines 30
Turbine Splines 14



- 70 Size 11.5" Sachs
Hub Smooth Hub W/50 Splines in I.D.
Pilot .787" & 1.300" OD
Mounting 4 Mounting Nuts
Stator Splines 29
Turbine Splines 29



Comment: 215001 or 215002 stamped on bottom cover -
154000 or 154001 stamped on impeller cover

New Torque Converters may be available. Contact your JI Rep. for price & availability.

Photo Reference Section is for use in identification of Converters and does not imply that Converters with similar Reference Numbers are identical.

Toll Free USA & Canada: 800-321-9983, Mexico: 001-800-561-1897 Fax: 330/342-3895 www.joseph.com

All manufacturers' names, numbers, symbols and descriptions are used for reference purpose only,
and it is not implied that any part listed is the product of the manufacturer.

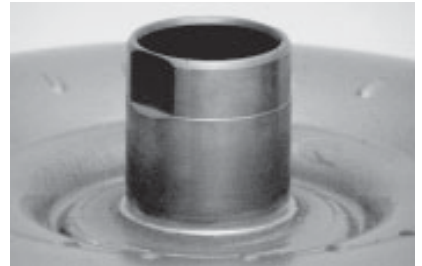
Photo Ref.

71 Size 11" Daikin
 Hub 2 Eared Hub
 Pilot .589" OD x .600" L
 Mounting 8 Threaded Holes
 Stator Splines 18
 Turbine Splines 14



Comment: No dowel pins at drive plate mounting

72 Size 11" Daikin
 Hub 2 Flats on Hub
 Pilot .787" OD x .660" L
 Mounting 6 Threaded Holes
 Stator Splines 30
 Turbine Splines 14 or 18



Comment: 14 turbine Splines fit J & K Series 2 speed Daikin; 18 turbine Splines fit single speed models HO2 series or 2 Speed HO2 Series Daikin

73 Size 11" Daikin
 Hub 2 Eared Hub
 Pilot .589" OD x .580" L - OR
 - .589" OD x .610" L
 Mounting 8 Threaded Holes
 Stator Splines 18
 Turbine Splines 14



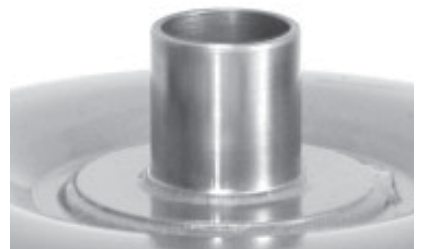
Comment: Can have 2 dowel pins or 0 dowel pins at drive plate mounting; cooling fins.

74 Size 13" Daikin
 Hub Geared Hub
 Pilot .787" OD x 1.50" L - OR
 - .984" OD x 1.10" L
 Mounting 6 Threaded Holes
 Stator Splines 18
 Turbine Splines 19



Comment: .787" Pilot fits early FO5 series trucks; .984" Pilot has 2 dowel pins at drive plate mounting

75 Size N/A
 Hub N/A
 Pilot 2.038" OD x 1.07" L
 Mounting 8 Threaded Holes
 Stator Splines 32
 Turbine Splines 15



Comment: N13044 DOZ stamped on top

New Torque Converters may be available. Contact your JI Rep. for price & availability.

Photo Reference Section is for use in identification of Converters and does not imply that Converters with similar Reference Numbers are identical.

Toll Free USA & Canada: 800-321-9983, Mexico: 001-800-561-1897 Fax: 330/342-3895 www.joseph.com

All manufacturers' names, numbers, symbols and descriptions are used for reference purpose only, and it is not implied that any part listed is the product of the manufacturer.

Copyright 2005, Joseph Industries, Inc.

Remanufactured Torque Converters



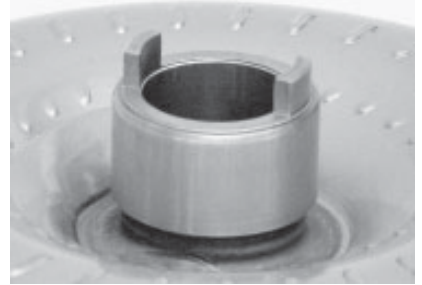
Photo Ref.

- 76 Size 13" Daikin
Hub Geared Hub
Pilot .982" OD
Mounting 6 Threaded Holes
Stator Splines 27
Turbine Splines 19



Comment: 4 dowel pins at drive plate mounting

- 77 Size 11.5" Sachs
Hub 2 Eared Hub
Pilot .750" OD
Mounting 6 Hole Ring
Stator Splines 15
Turbine Splines 19



Comment: 123301 stamped on bottom cover - 128400 stamped on impeller cover

- 78 Size 13" Daikin
Hub 2 Eared Hub
Pilot .787" OD x 1.50" L
Mounting 6 Threaded Holes
Stator Splines 18
Turbine Splines 19



Comment: Fits early style F03 series pneumatic tire truck; 2 dowel pins at drive plate mounting.

- 79 Size 13" Komatsu
Hub 2 Eared Hub
Pilot Removable type
Mounting 6 Threaded Holes
Stator Splines 18
Turbine Splines 19



- 80 Size 13" Daikin
Hub Geared Hub
Pilot .982" OD x 1.10" L
Mounting 6 Threaded Holes
Stator Splines 27
Turbine Splines 19



Comment: 2 dowel pins at drive plate mounting

New Torque Converters may be available. Contact your JI Rep. for price & availability.

Photo Reference Section is for use in identification of Converters and does not imply that Converters with similar Reference Numbers are identical.

Toll Free USA & Canada: 800-321-9983, Mexico: 001-800-561-1897 Fax: 330/342-3895 www.joseph.com

All manufacturers' names, numbers, symbols and descriptions are used for reference purpose only, and it is not implied that any part listed is the product of the manufacturer.

Photo Ref.

- 81** Size 12" Sachs
 Hub Smooth Hub W/Seal Ring Groove
 Pilot 1.177" OD x 1.19"
 Mounting 4 Mounting Pads
 Stator Splines 22
 Turbine Splines 18



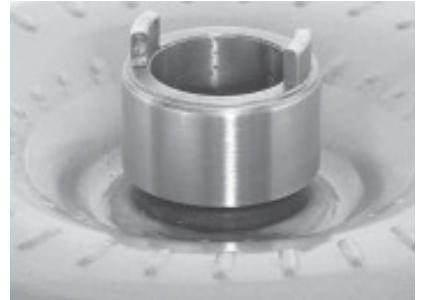
Comment: 046405 stamped on bottom cover - 046407 stamped on impeller cover

- 82** Size 13" Borg Warner
 Hub Smooth Hub W/50 Splines in I.D.
 Pilot .787" OD x .460" L
 Mounting 3 Mounting Pads
 Stator Splines 29
 Turbine Splines 29



Comment: Specify color code.

- 83** Size 11.5" Sachs
 Hub 2 Eared Hub
 Pilot .750" OD
 Mounting 6 Hole Ring
 Stator Splines 15
 Turbine Splines 19



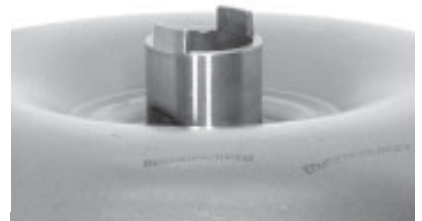
Comment: 123401 stamped on bottom cover - 128500 stamped on impeller cover

- 84** Size 11" Sachs
 Hub Smooth Hub W/50 Splines in I.D.
 Pilot .787" OD & 1.3" OD
 Mounting 4 Round Nuts
 Stator Splines 29
 Turbine Splines 29



Comment: 831233 stamped on impeller cover

- 85** Ford
 Hub 2 Eared Hub
 Pilot 1.572" OD
 Mounting 4 Studs
 Stator Splines 29
 Turbine Splines 29



Comment:

New Torque Converters may be available. Contact your JI Rep. for price & availability.

Photo Reference Section is for use in identification of Converters and does not imply that Converters with similar Reference Numbers are identical.

Toll Free USA & Canada: 800-321-9983, Mexico: 001-800-561-1897 Fax: 330/342-3895 www.joseph.com

All manufacturers' names, numbers, symbols and descriptions are used for reference purpose only,
 and it is not implied that any part listed is the product of the manufacturer.

Copyright 2005, Joseph Industries, Inc.

Remanufactured Torque Converters



Photo Ref.

- 86 Size 11" Borg Warner
Hub Splined Hub
Pilot .787" OD
Mounting 4 Square Nuts
Stator Splines 19
Turbine Splines 20



Comment: Code Letters: TM

- 87 Size 11" Sachs
Hub Smooth Hub
Pilot 1.812" OD
Mounting 4 Mounting Pads
Stator Splines 38
Turbine Splines 27



- 88 Size 11" Mazda
Hub 2 Flats on Hub
Pilot .589" OD x .895" L
Mounting 6 Threaded Holes
Stator Splines 32
Turbine Splines 18



- 88 Size 11" Mazda
Hub Smooth Hub
Pilot .589" OD x .895" L
Mounting 6 Threaded Holes
Stator Splines 32
Turbine Splines 20



- 90 Size 11" Toyota
Hub 4 Eared Hub
Pilot .589" OD x 1" L
Mounting 6 Threaded Holes
Stator Splines 10
Turbine Splines 18



Comment: Hub has seal ring groove. Fits some Komatsu and Kalmar models

New Torque Converters may be available. Contact your JI Rep. for price & availability.

Photo Reference Section is for use in identification of Converters and does not imply that Converters with similar Reference Numbers are identical.

Toll Free USA & Canada: 800-321-9983, Mexico: 001-800-561-1897 Fax: 330/342-3895 www.joseph.com

All manufacturers' names, numbers, symbols and descriptions are used for reference purpose only,
and it is not implied that any part listed is the product of the manufacturer.

Photo Ref.

- 91** Size 11" Mitsubishi
 Hub 2 Flats on hub
 Pilot .589" OD x .600 L
 Mounting 8 Threaded Holes
 Stator Splines 30
 Turbine Splines 14



Comment: 019274 on side of top

- 92** Size 13" Daikin
 Hub Geared Hub
 Pilot .589" OD x 1.550 L
 Mounting 8 Threaded Holes
 Stator Splines 31
 Turbine Splines 20



Comment: 7202 stamped on side of bottom

- 93** Size 11 3/4" or 12"
 Hub 2 Eared Hub
 Pilot
 Mounting
 Stator Splines
 Turbine Splines 17 or 29



Comment: May also have splined hub

- 94** Size 11" Mazda
 Hub 2 Eared Hub
 Pilot .589" OD x .600 L
 Mounting 4 Threaded Holes
 Stator Splines 19
 Turbine Splines 20



Comment:

- 95** Size 11" Toyota
 Hub 2 Flats on Hub
 Pilot 1.257" OD x .70 L
 Mounting 6 Threaded Holes
 Stator Splines 30
 Turbine Splines 14



Comment: Used in 5 Series Toyota 1 ton models

New Torque Converters may be available. Contact your JI Rep. for price & availability.

Photo Reference Section is for use in identification of Converters and does not imply that Converters with similar Reference Numbers are identical.

Toll Free USA & Canada: 800-321-9983, Mexico: 001-800-561-1897 Fax: 330/342-3895 www.joseph.com

All manufacturers' names, numbers, symbols and descriptions are used for reference purpose only,
 and it is not implied that any part listed is the product of the manufacturer.

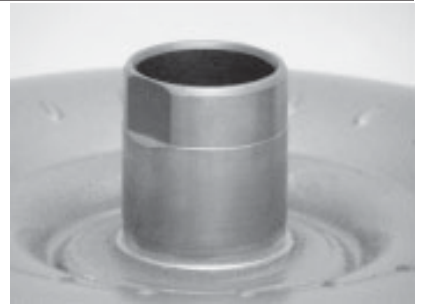
Copyright 2005, Joseph Industries, Inc.

Remanufactured Torque Converters



Photo Ref.

- 96 Size 12" Mazda
Hub 2 Flats on Hub
Pilot .589" OD x .625 L
Mounting 8 Threaded Holes
Stator Splines 16
Turbine Splines 19



Comment:

- 97 Size 10.5" Mazda
Hub 2 Flats on Hub
Pilot .668" OD x .60 L
Mounting 6 Threaded Holes
Stator Splines 30
Turbine Splines 14



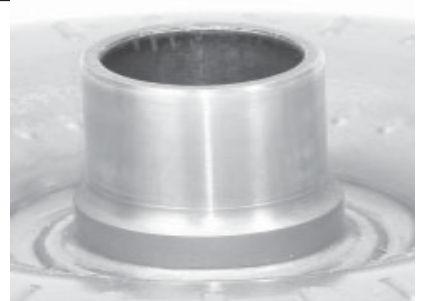
Comment: Mounting holes spaced at 65 - 55 - 65 - 55 degree intervals

- 98 Size 11" Toyota
Hub 4 Eared Hub
Pilot 1.257" OD
Mounting 6 Threaded Nuts
Stator Splines 10
Turbine Splines 18



Comment: Hub has seal ring groove.

- 99 Size Fitchel & Sachs
Hub
Pilot 1.375" OD
Mounting 4 Tabs
Stator Splines 19
Turbine Splines 17



Comment: 065001 stamped on bottom.

- 100 Size 13" Daikin
Hub Geared Hub
Pilot Removable Type
Mounting 6 Threaded Holes
Stator Splines 18
Turbine Splines 19



Comment: Fits late F05 Series Trucks

New Torque Converters may be available. Contact your JI Rep. for price & availability.

Photo Reference Section is for use in identification of Converters and does not imply that Converters with similar Reference Numbers are identical.

Toll Free USA & Canada: 800-321-9983, Mexico: 001-800-561-1897 Fax: 330/342-3895 www.joseph.com

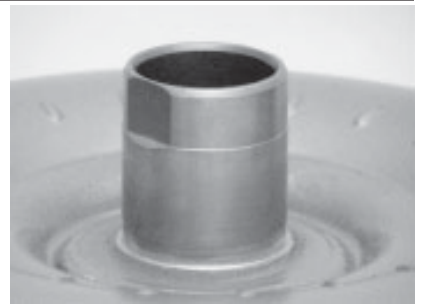
All manufacturers' names, numbers, symbols and descriptions are used for reference purpose only, and it is not implied that any part listed is the product of the manufacturer.

Copyright 2005, Joseph Industries, Inc.

Photo Ref.

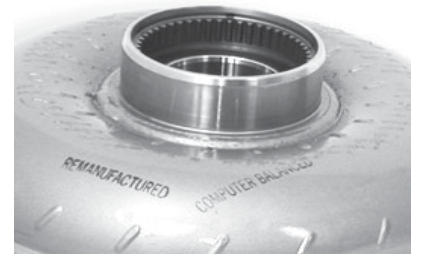
101 Mitsubishi
 Hub 2 Flats on Hub
 Pilot .589" OD x .615 L
 Mounting 6 Threaded Holes
 Stator Splines 30
 Turbine Splines 14

Comment: CO stamped on top.



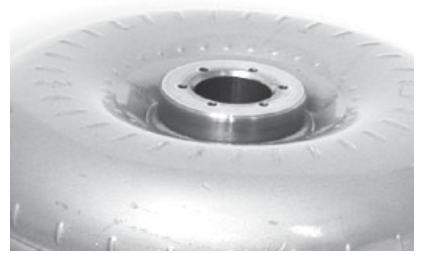
102 Size 11" Exedy
 Hub 3.75" OD with 50 Splines on ID
 Pilot .787" OD x .475 L or 1.30" OD x .540 L
 Mounting 4 Round Nuts
 Stator Splines 29
 Turbine Splines 29

Comment: OY1376 on side of bottom.



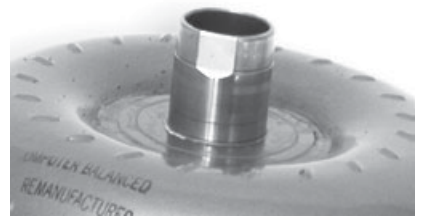
103 Size 11 1/2" Sachs
 Hub Flange for Removable Geared Hub
 Pilot .750" OD x .750 L
 Mounting 6 Nuts
 Stator Splines 29
 Turbine Splines 29

Comment: Top Stamped 186000 Bottom Stamped 318001



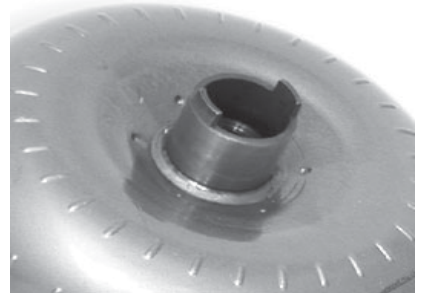
104 Size 10 1/2" Yale
 Hub 2 Flats on Hub
 Pilot .787" OD x .450 L
 Mounting 4 Pads
 Stator Splines 30
 Turbine Splines 14

Comment: 1 brown stripe on top. 1 white stripe on bottom.



105 Borg Warner
 Hub 2 Eared Hub
 Pilot .750" OD
 Mounting 4 Studs
 Stator Splines
 Turbine Splines 22

Comment:



New Torque Converters may be available. Contact your JI Rep. for price & availability.

Photo Reference Section is for use in identification of Converters and does not imply that Converters with similar Reference Numbers are identical.

Toll Free USA & Canada: 800-321-9983, Mexico: 001-800-561-1897 Fax: 330/342-3895 www.joseph.com

All manufacturers' names, numbers, symbols and descriptions are used for reference purpose only,
 and it is not implied that any part listed is the product of the manufacturer.

Copyright 2005, Joseph Industries, Inc.

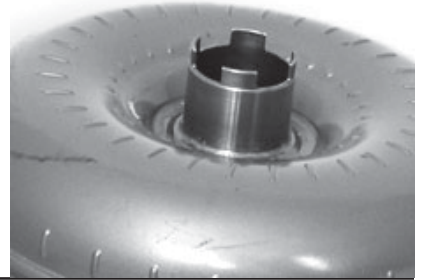
Remanufactured Torque Converters



Photo Ref.

106

Hub 4 Eared Thin Hub
Pilot .750" OD
Mounting 6 Mounting Straps
Stator Splines 19
Turbine Splines 19



Comment: Code Letters: CE, EA, DE, OE, BF, DF, ED, FH

107

Hub 2 Eared Hub
Pilot .750" OD
Mounting 6 Mounting Nuts
Stator Splines 29
Turbine Splines 17



Comment: Code Letters: NH, JC, JV. With cooling shroud.

108 Size 11"

Hub 2 Eared Hub
Pilot .589" OD x .920 L
Mounting 6 Threaded Holes
Stator Splines 19
Turbine Splines 18



Comment:

109 Size 11" Toyota

Hub 4 Eared Hub
Pilot 1.257" OD x .560 L
Mounting 6 oblong nuts
Stator Splines 10
Turbine Splines 18



Comment:

110 Size 14 1/2" Fitchel & Sachs

Hub Smooth Hub with Seal Ring Groove
Pilot 2.358" OD with 25 splines on bottom
Mounting 25 Spline Pilot
Stator Splines 46
Turbine Splines 30



Comment: 135007 on bottom

New Torque Converters may be available. Contact your JI Rep. for price & availability.

Photo Reference Section is for use in identification of Converters and does not imply that Converters with similar Reference Numbers are identical.

Toll Free USA & Canada: 800-321-9983, Mexico: 001-800-561-1897 Fax: 330/342-3895 www.joseph.com

All manufacturers' names, numbers, symbols and descriptions are used for reference purpose only, and it is not implied that any part listed is the product of the manufacturer.

Photo Ref.

111 Size Fitchel & Sachs
 Hub Smooth Hub with 46 Splines in ID
 Pilot 1.375 OD
 Mounting 4 Mounting Pads
 Stator Splines 19
 Turbine Splines 29



Comment:

112 Size 13" Daikin Exedy
 Hub 2 Flats on Hub
 Pilot 2.439" OD x 2.160 L
 Mounting 8 Threaded Holes
 Stator Splines Top 31 Bottom 20
 Turbine Splines 20



Comment:

113 Size 13" Daikin
 Hub 2 Eared Hub
 Pilot 2.950" OD x 1.677 L
 Mounting 6 threaded holes
 Stator Splines 18
 Turbine Splines 19



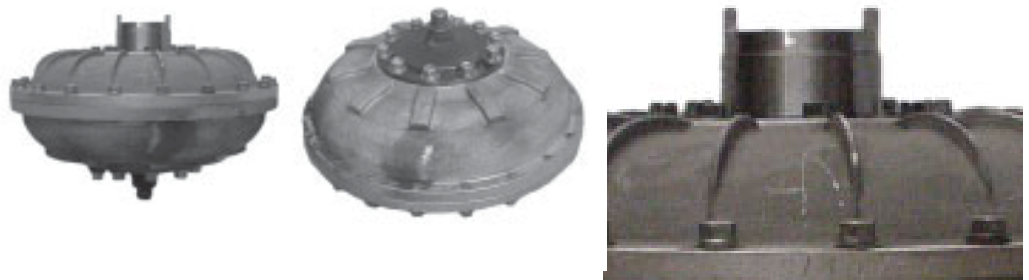
Comment: D with four digits

114 Size
 Hub
 Pilot
 Mounting
 Stator Splines
 Turbine Splines



Comment:

115 Size
 Hub 2 Eared Hub
 Pilot
 Mounting
 Stator Splines
 Turbine Splines 16



Comment:

New Torque Converters may be available. Contact your JI Rep. for price & availability.

Photo Reference Section is for use in identification of Converters and does not imply that Converters with similar Reference Numbers are identical.

Toll Free USA & Canada: 800-321-9983, Mexico: 001-800-561-1897 Fax: 330/342-3895 www.joseph.com

All manufacturers' names, numbers, symbols and descriptions are used for reference purpose only,
 and it is not implied that any part listed is the product of the manufacturer.

Copyright 2005, Joseph Industries, Inc.

Remanufactured Torque Converters



Photo Ref.

116 Size
Hub 2 Eared Hub
Pilot
Mounting
Stator Splines
Turbine Splines



Comment:

117 Size
Hub 2 Eared Hub
Pilot
Mounting
Stator Splines
Turbine Splines



Comment:

118 Size 12 1/2" Mitsubishi
Hub N/A
Pilot .787" OD x .60 L
Mounting 10 Threaded Holes
Stator Splines 18
Turbine Splines 16



Comment: Color Code: One white spot on bottom. DM100000 on bottom.

119 Size 14 1/2" Sachs
Hub N/A
Pilot 1.573" OD x 1.031 L
Mounting 4 Mounting Pads
Stator Splines 46
Turbine Splines 30



Comment: Color Code: One red spot on top.

120 Size 11 1/2" Borg Warner
Hub N/A
Pilot .787" OD x .750 L
Mounting 4 Mounting Nuts
Stator Splines 19
Turbine Splines 20



Comment: 2816242 stamped on bottom.

New Torque Converters may be available. Contact your JI Rep. for price & availability.

Photo Reference Section is for use in identification of Converters and does not imply that Converters with similar Reference Numbers are identical.

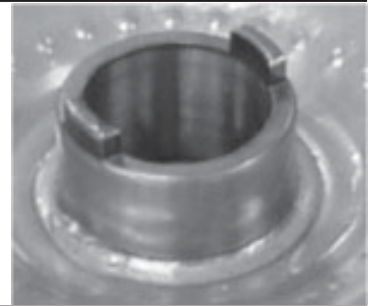
Toll Free USA & Canada: 800-321-9983, Mexico: 001-800-561-1897 Fax: 330/342-3895 www.joseph.com

All manufacturers' names, numbers, symbols and descriptions are used for reference purpose only,
and it is not implied that any part listed is the product of the manufacturer.

Copyright 2005, Joseph Industries, Inc.

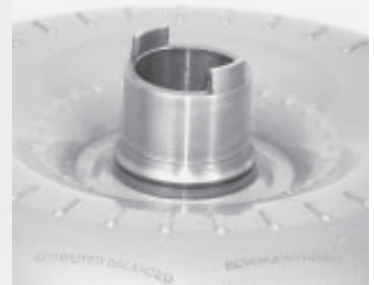
Photo Ref.

121 Size 11" Fitchel & Sachs
 Hub 2 Eared Hub
 Pilot 1.180" OD x .450 L
 Mounting 7.160 welded ring with 6 Holes
 Stator Splines 28
 Turbine Splines 26



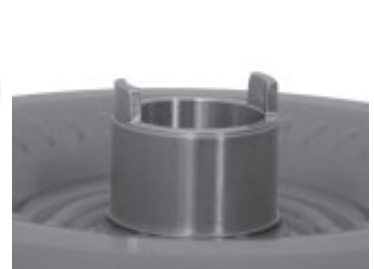
Comment: 175000, 175001 or 175002 on top. 283001, 283002 or 283003 on bottom.

122 Size Fitchel & Sachs
 Hub 2 Eared Hub
 Pilot .787" OD
 Mounting 4 Mounting Pads
 Stator Splines 29
 Turbine Splines 29



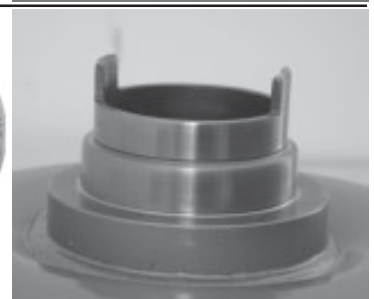
Comment: 063001 Stamped on Bottom

123 Size 13"
 Hub 2 Eared Hub
 Pilot 1.702" OD x .600 L
 Mounting 3 Oblong Pads
 Stator Splines 21
 Turbine Splines 19



Comment: Color Code: 1 blue and 1 black dot / stripe.

124 Size 11" Komatsu
 Hub 2 Eared Hub
 Pilot N/A Removable Input Guide
 Mounting 8 Threaded Holes 4 Dowel Pins
 Stator Splines 22
 Turbine Splines 18



Comment:

125 Size 11" TCM
 Hub 2 Eared Hub
 Pilot .589" OD x .675 L
 Mounting 6 Threaded Holes
 Stator Splines 30
 Turbine Splines 14



Comment: OY and four digits stamped around the side along the weld.

New Torque Converters may be available. Contact your JI Rep. for price & availability.

Photo Reference Section is for use in identification of Converters and does not imply that Converters with similar Reference Numbers are identical.

Toll Free USA & Canada: 800-321-9983, Mexico: 001-800-561-1897 Fax: 330/342-3895 www.joseph.com

All manufacturers' names, numbers, symbols and descriptions are used for reference purpose only,
 and it is not implied that any part listed is the product of the manufacturer.

Copyright 2005, Joseph Industries, Inc.

Remanufactured Torque Converters



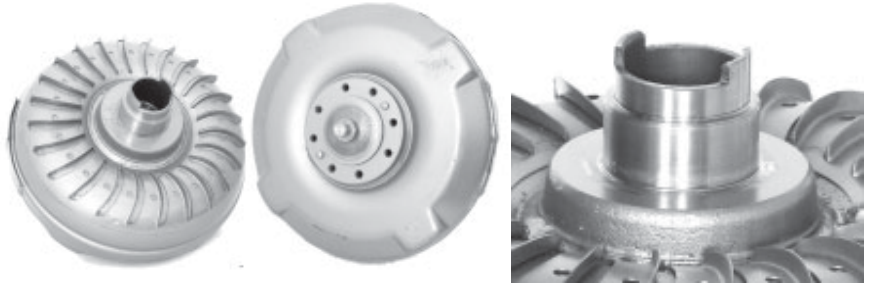
Photo Ref.

126 Size 11" Mitsubishi
Hub 2 Flats on Hub
Pilot .589" OD x .600 L
Mounting 8 Threaded Holes
Stator Splines 30
Turbine Splines 14



Comment:

127 Size 11" Mitsubishi
Hub 2 Eared Hub
Pilot .589" OD x .580 L
Mounting 8 Threaded Holes 2 Dowel Pins
Stator Splines 18
Turbine Splines 14



Comment: D with 4 digits.

New Torque Converters may be available. Contact your JI Rep. for price & availability.

Photo Reference Section is for use in identification of Converters and does not imply that Converters with similar Reference Numbers are identical.

Toll Free USA & Canada: 800-321-9983, Mexico: 001-800-561-1897 Fax: 330/342-3895 www.joseph.com

All manufacturers' names, numbers, symbols and descriptions are used for reference purpose only, and it is not implied that any part listed is the product of the manufacturer.