



New Torque Converters may be available. Contact your JI Rep. for price & availability.

Photo Reference Section is for use in identification of Converters and does not imply that Converters with similar Reference Numbers are identical.

**Toll Free USA & Canada: 800-321-9983, Mexico: 001-800-561-1897 Fax: 330/342-3895 [www.joseph.com](http://www.joseph.com)**

All manufacturers' names, numbers, symbols and descriptions are used for reference purpose only,  
and it is not implied that any part listed is the product of the manufacturer.

Copyright 2005, Joseph Industries, Inc.

# Remanufactured Torque Converters Steel Welded



Part Number	Hub	Mounting	Splines	Photo Ref	Part Number	Hub	Mounting	Splines	Photo Ref
<b>Allison</b>					<b>Caterpillar continued</b>				
29514486R	Slotted Hub	6 Mounting Pads	30 Splines	13	6Y6778R	2 Eared Hub	6 Hole Ring	19 Splines	77
29514487R	Slotted Hub	6 Mounting Pads	30 Splines	13	7G8101R	4 Eared Thin	6 Mounting Straps	19 Splines	26
6778111R	Slotted Hub	3 Mounting Pads	17 Splines	No Photo	7G8102R	4 Eared Hub	6 Mounting Nuts	19 Splines	28
73142880R	Smooth Hub w/Seal Ring Groove	4 Mounting Pads	18 Splines	81	7G8103R	4 Eared Hub	6 Mounting Nuts	19 Splines	27
<b>Baker</b>					<b>Champ</b>				
100895R	2 Eared Hub	4 Studs	22 Splines	105	03-203R	2 Eared Hub	6 Mounting Nuts	29 Splines	43
102234R	2 Eared Hub	Large Circular High Nuts	22 Splines	No Photo	F040-0261R	4 Eared Hub	6 Mounting Nuts	19 Splines	28
105760R	4 Eared Hub	6 Mounting Nuts	19 Splines	28	<b>Chrysler</b>				
105761R	4 Eared Hub	6 Mounting Nuts	19 Splines	28	2843586R	Slotted Hub	4 Mounting Pads	24 Splines	17
107146R	4 Eared Hub	6 Mounting Nuts	19 Splines	28	3745454R	Smooth Hub w/Bushing in ID	4 Mounting Pads	19 Splines	22
111268R	4 Eared Hub	6 Mounting Nuts	19 Splines	28	4058694R	Slotted Hub	4 Mounting Pads	27 Splines	15
117487R	4 Eared Hub	6 Mounting Nuts	19 Splines	28	4058695R	Slotted Hub	4 Mounting Pads	27 Splines	15
117737R	4 Eared Hub	6 Mounting Nuts	19 Splines	28	4106569R	Slotted Hub	4 Mounting Pads	27 Splines	15
117790R	4 Eared Hub	6 Mounting Nuts	19 Splines	28	<b>Clark</b>				
117961R	4 Eared Hub	6 Mounting Nuts	19 Splines	28	1680930R	2 Eared Hub	6 Mounting Nuts	17 Splines	18
118023R	4 Eared Hub	6 Mounting Nuts	19 Splines	28	1680931R	2 Eared Hub	6 Mounting Nuts	29 Splines	32
118024R	4 Eared Hub	6 Mounting Nuts	19 Splines	28	1680932R	4 Eared Hub	6 Mounting Nuts	19 Splines	28
3000AN1R	4 Eared Hub	6 Mounting Nuts	19 Splines	28	1763309R	2 Eared Hub	6 Mounting Nuts	17 Splines	No Photo
3000AP1R	4 Eared Hub	6 Mounting Nuts	19 Splines	28	224337R	4 Eared Hub	6 Mounting Nuts	15 Splines	2
401251R	2 Flats on Hub	4 Studs	29 Splines	30	w/Bushing				
9021A1R	4 Eared Thin	6 Mounting Straps	19 Splines	106	224375R	4 Eared Hub	6 Mounting Nuts	15 Splines	2
9021C1R	4 Eared Hub	6 Mounting Nuts	19 Splines	28	w/Bushing				
9021D1R	4 Eared Hub	6 Mounting Nuts	19 Splines	28	224381R	4 Eared Hub	6 Mounting Nuts	15 Splines	2
9021E1R	4 Eared Hub	6 Mounting Nuts	19 Splines	28	w/Bushing				
<b>Caterpillar</b>					<b>225142R</b>				
1014859R	2 Eared Hub	8 Threaded Holes	14 Splines	73	4 Eared Hub	Nuts	15 Splines	No Photo	
1039497R	2 Eared Hub	8 Threaded Holes	14 Splines	63	229251R	4 Eared Hub	6 Mounting Straps	15 Splines	3
1039498R	2 Eared Hub	8 Threaded Holes	14 Splines	71	w/Bushing				
1085293R	2 Eared Hub	8 Threaded Holes	14 Splines	71	229252R	4 Eared Hub	6 Mounting Nuts	15 Splines	2
1112755R	2 Eared Hub	8 Threaded Holes	14 Splines	73	w/Bushing				
29934R	4 Eared Thin	6 Mounting Straps	19 Splines	26	229253R	4 Eared Hub	6 Mounting Nuts	15 Splines	2
29941R	4 Eared Thin	6 Mounting Straps	19 Splines	26	w/Bushing				
34048R	2 Eared Hub	6 Mounting Straps	17 Splines	No Photo	<b>JOSEPH INDUSTRIES, INC.</b>				
349355R	4 Eared Hub	6 Mounting Nuts	19 Splines	28	<b>Photo Reference Section is for use in identification of Converters and does not imply that Converters with similar Reference Numbers are identical.</b>				
351225R	2 Eared Hub	6 Mounting Nuts	17 Splines	24	<b>Toll Free USA &amp; Canada: 800-321-9983, Mexico: 001-800-561-1897 Fax: 330/342-3895 www.joseph.com</b>				
351614R	4 Eared Thin	6 Mounting Straps	19 Splines	26	All manufacturers' names, numbers, symbols and descriptions are used for reference purpose only,				
351616R	4 Eared Thin	6 Mounting Straps	19 Splines	26	and it is not implied that any part listed is the product of the manufacturer.				
352293R	4 Eared Hub	6 Mounting Nuts	19 Splines	28	Copyright 2005, Joseph Industries, Inc.				
357896R	4 Eared Hub	6 Mounting Nuts	15 Splines	2					
w/Bushing									
369884R	4 Eared Hub	6 Mounting Nuts	19 Splines	28					
379608R	2 Eared Hub	6 Mounting Nuts	29 Splines	43					
4B4277R	2 Eared Hub	6 Mounting Nuts	17 Splines	24					
642933R	4 Eared Hub	6 Mounting Nuts	19 Splines	28					
642972R	4 Eared Hub	6 Mounting Nuts	19 Splines	28					
671111R	2 Eared Hub	4 Studs	17 Splines	No Photo					
6T5842R	Splined Hub	6 Mounting Nuts	29 Splines	42					
6T5899R	Slotted Hub	4 Mounting Pads	27 Splines	39					
6T9487R	2 Eared Hub	6 Mounting Nuts	17 Splines	24					

New Torque Converters may be available. Contact your JI Rep. for price & availability.

Photo Reference Section is for use in identification of Converters and does not imply that Converters with similar Reference Numbers are identical.

**Toll Free USA & Canada: 800-321-9983, Mexico: 001-800-561-1897 Fax: 330/342-3895 www.joseph.com**

All manufacturers' names, numbers, symbols and descriptions are used for reference purpose only,

and it is not implied that any part listed is the product of the manufacturer.



# Remanufactured Torque Converters Steel Welded

Part Number	Hub	Mounting	Splines	Photo Ref	Part Number	Hub	Mounting	Splines	Photo Ref
<b>Clark continued</b>					<b>Hyster</b>				
229254R	4 Eared Hub	Nuts	15 Splines	No Photo	104630R	4 Eared Thin	6 Mounting Straps	19 Splines	26
2342062R	4 Eared Hub	6 Mounting Nuts	19 Splines	28	109400R	2 Eared Hub	6 Mounting Nuts	17 Splines	4
237324R	4 Eared Hub	6 Mounting Nuts	15 Splines	2	113572R	2 Eared Hub	6 Mounting Nuts	17 Splines	4
		w/Bushing			1327681R	Smooth Hub	4 Mounting Pads	26 Splines	10
2375190R	2 Eared Hub	6 Mounting Nuts	29 Splines	43			w/36 Splines in ID		
239152R	Removable Geared Hub	6 Square Mounting Nuts	15 Splines	35	1328939R	Slotted Hub	4 Mounting Pads	27 Splines	15
241052R	Removable Geared Hub	4 Thick Square Mounting Nuts	15 Splines	23	1334714R	Smooth Hub	4 Mounting Nuts	29 Splines	70
241052SPL	Removable Geared Hub	4 Thick Square Mounting Nuts	15 Splines	23			w/50 Splines in ID		
242251R	Removable Geared Hub	4 Square Mounting Nuts	15 Splines	20	1343585R	Smooth Hub	3 Mounting Pads	19 Splines	82
244109R	Splined Hub	4 Mounting Nuts	20 Splines	55			w/50 Splines in ID		
245299R	Splined Hub	4 Mounting Nuts	20 Splines	86	1343586R	Smooth Hub	3 Mounting Pads	19 Splines	82
246675R	Splined Hub	6 Mounting Pads	20 Splines	9			w/50 Splines in ID		
247114R	Splined Hub	6 Mounting Pads	20 Splines	9	1343925R	2 Eared Hub	6 Mounting Nuts	19 Splines	61
2787349R	Splined Hub	3 Mounting Pads	15 Splines	8	1361478R	Slotted Hub	4 Mounting Pads	27 Splines	No Photo
2811291R	4 Eared Hub w/Bushing	6 Mounting Nuts	15 Splines	2	1367387R	2 Eared Hub	6 Threaded Holes	14 Splines	7
2811366R	Splined Hub	3 Mounting Pads	15 Splines	8	1367389R	2 Eared Hub	6 Threaded Holes	14 Splines	60
2816242R	Splined Hub	4 Mounting Nuts	20 Splines	120	1374620R	Smooth Hub	4 Mounting Nuts	29 Splines	70
316477R	2 Eared Hub	6 Mounting Nuts	17 Splines	18			w/50 Splines in ID		
4202497R	Splined Hub	6 Mounting Pads	20 Splines	9	1375707R	Smooth Hub	3 Mounting Pads	19 Splines	82
4886475R	Removable Geared Hub	6 Mounting Nuts	29 Splines	103			w/50 Splines in ID		
796682R	2 Eared Hub	6 Mounting Nuts	29 Splines	32	137725R	Slotted Hub	4 Mounting Pads	27 Splines	46
878127R	2 Eared Hub	6 Mounting Straps	17 Splines	No Photo	1383785R	2 Eared Hub	6 Mounting Nuts	19 Splines	61
890988R	2 Eared Hub	4 Studs	29 Splines	19	1386795R	Smooth Hub	4 Round Nuts	29 Splines	84
927515R	Removable Geared Hub	6 Nuts	29 Splines	103			w/50 Splines in ID		
927640R	Removable Geared Hub	6 Nuts	29 Splines	103	1386815R	Smooth Hub	4 Round Nuts	29 Splines	102
990339R	2 Flats on Hub	4 Studs	29 Splines	31			w/50 Splines in ID		
999641R	2 Flats on Hub	4 Studs	29 Splines	37	1386816R	Smooth Hub	3 Mounting Pads	19 Splines	82
<b>Clark Hurth</b>					1386817R	Smooth Hub	3 Mounting Pads	19 Splines	82
246675R	Splined Hub	6 Mounting Pads	20 Splines	9			w/50 Splines in ID		
247114R	Splined Hub	6 Mounting Pads	20 Splines	9	1388694R	N/A	3 Oblong Pads	19 Splines	No Photo
<b>Daewoo</b>					1468682R	N/A	3 Oblong Pads	19 Splines	No Photo
8E6297R	Splined Hub	6 Mounting Nuts	29 Splines	42	1503453R	2 Eared Hub	3 Oblong Pads	19 Splines	123
8E6299R	Splined Hub	6 Mounting Nuts	29 Splines	42	152185R	2 Eared Hub	6 Mounting Nuts	29 Splines	29
A213021R	2 Eared Hub	Weld Ring with 6 Holes	28 Splines	121	162692R	Slotted Hub	4 Mounting Pads	18 Splines	46
A213432R	2 Eared Hub	Weld Ring with 6 Holes	28 Splines	121	165983R	2 Eared Hub	6 Mounting Nuts	17 Splines	4
A213442R	2 Eared Hub	Weld Ring with 6 Holes	28 Splines	121	172077R	2 Eared Hub	6 Mounting Nuts	17 Splines	4
A233178R	2 Eared Hub	6 Mounting Nuts	29 Splines	43	197989R	Slotted Hub	4 Mounting Pads	24 Splines	17
A250508R	N/A	4 Mounting Pads	27 Splines	No Photo	201610AR	Smooth Hub	8 Studs	19 Splines	34
D160328R	2 Eared Hub	6 Mounting Nuts	29 Splines	43	2021351R	2 Eared Hub	6 Threaded Holes	14 Splines	60
D180209R	2 Eared Hub	6 Mounting Nuts	29 Splines	43	2021678R	2 Eared Hub	6 Threaded Holes	14 Splines	7
					2023912R	2 Flats on Hub	6 Threaded Holes	14 Splines	11
					2023993R	2 Flats on Hub	6 Threaded Holes	14 Splines	11
					2026866R	2 Flats on Hub	6 Threaded Holes	14 Splines	97
					2043273R	2 Flats on Hub	4 Mounting Pads	14 Splines	104
					205794R	2 Eared Hub	6 Mounting Nuts	17 Splines	4
					219924R	2 Slots	4 Mounting Pads	27 Splines	No Photo
					278240R	Slotted Hub	4 Mounting Pads	27 Splines	15
					2801359R	Slotted Hub	4 Mounting Pads	24 Splines	17
					291924R	Slotted Hub	4 Mounting Pads	27 Splines	46
					296913R	Smooth Hub	4 Mounting Pads	27 Splines	87
					3031954R	2 Slots	4 Mounting Pads	27 Splines	No Photo
					313512R	Slotted Hub	4 Mounting Pads	27 Splines	15
					314794R	2 Eared Hub	4 Mounting Pads	29 Splines	122

New Torque Converters may be available. Contact your JI Rep. for price & availability.

Photo Reference Section is for use in identification of Converters and does not imply that Converters with similar Reference Numbers are identical.

**Toll Free USA & Canada: 800-321-9983, Mexico: 001-800-561-1897 Fax: 330/342-3895 www.joseph.com**

All manufacturers' names, numbers, symbols and descriptions are used for reference purpose only, and it is not implied that any part listed is the product of the manufacturer.

Copyright 2005, Joseph Industries, Inc.

# Remanufactured Torque Converters Steel Welded



Part Number	Hub	Mounting	Splines	Photo Ref	Part Number	Hub	Mounting	Splines	Photo Ref
<b>Hyster continued</b>					<b>Komatsu continued</b>				
319279R	N/A	4 Tabs	17 Splines	99	3EC-13-16100R	2 Eared Hub	6 Threaded Holes	16 Splines	38
344332R	2 Eared Hub	4 Mounting Tabs	19 Splines	50	AS32020-3600R	4 Eared Hub	6 Threaded Holes	18 Splines	90
344343R	2 Eared Hub	4 Mounting Pads	18 Splines	51	<b>Lancer Boss</b>				
370844R	2 Eared Hub	4 Mounting Pads	18 Splines	51	8548854R	2 Eared Hub	6 Mounting Nuts	17 Splines	4
377017R	2 Eared Hub	4 Mounting Tabs	29 Splines	48	8608643R	N/A	4 Round Nuts	23 Splines	No Photo
377166R	2 Eared Hub	4 Mounting Tabs	29 Splines	48	9166805R	2 Eared Hub	6 Mounting Nuts	29 Splines	29
387458R	Slotted Hub	4 Mounting Pads	27 Splines	No Photo	<b>Lion Liftall</b>				
<b>Kalmar Allis Chalmers</b>					400499R	2 Eared Hub	6 Mounting Nuts	29 Splines	32
4752270R	4 Eared Hub	6 Mounting Nuts	19 Splines	27	400606R	2 Eared Hub	6 Mounting Nuts	29 Splines	43
4752271R	4 Eared Hub	6 Mounting Nuts	19 Splines	27	921329-0002R	Smooth Hub	6 Mounting Nuts	29 Splines	16
4791428R	4 Eared Hub	6 Mounting Nuts	19 Splines	27	w/25 Splines in ID				
4812050R	2 Eared Hub	4 Studs	22 Splines	105	<b>Lull</b>				
4814282R	2 Eared Hub	6 Mounting Nuts	17 Splines	107	37762-XR	Splinted Hub	6 Mounting Pads	25 Splines	No Photo
4834552R	4 Eared Hub	6 Mounting Nuts	19 Splines	28	<b>Mitsubishi</b>				
4838769R	2 Eared Hub	6 Mounting Nuts	17 Splines	1	91123-00020R	2 Eared Hub	8 Threaded Holes	14 Splines	73
4859284R	2 Eared Hub	6 Mounting Nuts	17 Splines	24	91123-00021R	2 Eared Hub	8 Threaded Holes	14 Splines	73
4859285R	2 Eared Hub	6 Mounting Nuts	17 Splines	24	91223-04100R	2 Eared Hub	8 Threaded Holes	14 Splines	73
4877863R	2 Eared Hub	6 Mounting Nuts	29 Splines	43	91223-10040R	2 Eared Hub	8 Threaded Holes	14 Splines	127
4884041R	2 Eared Hub	6 Mounting Nuts	17 Splines	24	91223-10041R	2 Eared Hub	8 Threaded Holes	14 Splines	73
4886475R	2 Eared Hub	6 Mounting Nuts	29 Splines	43	91323-00070R	2 Flats on Hub	6 Threaded Holes	14 Splines	101
4889011R	4 Eared Hub	6 Mounting Nuts	19 Splines	27	91323-10050R	2 Eared Hub	8 Threaded Holes	14 Splines	63
4906518R	2 Eared Hub	Short Round Nuts	22 Splines	No Photo	91323-10061R	2 Eared Hub	8 Threaded Holes	14 Splines	71
4907169R	4 Eared Hub	6 Mounting Nuts	19 Splines	27	91523-10010R	2 Flats on Hub	8 Threaded Holes	14 Splines	91
4907170R	4 Eared Hub	6 Mounting Nuts	19 Splines	27	91523-20010R	2 Flats on Hub	8 Threaded Holes	14 Splines	91
4917742R	Slotted Hub	4 Mounting Pads	27 Splines	39	91823-00070R	N/A	10 Threaded Holes	16 Splines	118
4940408R	2 Eared Hub	8 Threaded Holes	18 Splines	No Photo	91823-04100R	N/A	10 Threaded Holes	16 Splines	118
4940781R	2 Eared Hub	8 Threaded Holes	18 Splines	52	91A23-10020R	2 Flats on Hub	8 Threaded Holes	14 Splines	126
4944450R	2 Eared Hub	6 Threaded Holes	19 Splines	79	93123-00010R	2 Flats on Hub	6 Threaded Holes	14 Splines	101
4944452R	2 Eared Hub	6 Threaded Holes	19 Splines	79	93423-00010R	2 Flats on Hub	8 Threaded Holes	14 Splines	91
4944483R	2 Eared Hub	6 Threaded Holes	16 Splines	38	93723-00030R	N/A	10 Threaded Holes	16 Splines	118
4949254R	2 Eared Hub	8 Threaded Holes	18 Splines	52	<b>Nissan</b>				
4949256R	2 Flats on Hub	8 Threaded Holes	14 Splines	69	31100-4K000R	Geared Hub	8 Threaded Holes	20 Splines	57
4967549R	2 Flats on Hub	8 Threaded Holes	14 Splines	69	31100-4K100R	Geared Hub	8 Threaded Holes	20 Splines	57
8611878R	2 Eared Hub	6 Mounting Nuts	29 Splines	43	31100-53H00R	2 Flats on Hub	8 Threaded Holes	20 Splines	112
8761285R	4 Eared Hub	6 Threaded Holes	18 Splines	90	31100-L9000R	Geared Hub	6 Threaded Holes	19 Splines	74
<b>Komatsu</b>					31100-L9060R	Geared Hub	6 Threaded Holes	19 Splines	100
3EA-13-11910R	2 Eared Hub	8 Threaded Holes	18 Splines	124	31110-05H00R	2 Flats on Hub	6 Threaded Holes	18 Splines	72
3EA-13-12100R	2 Eared Hub	8 Threaded Holes	18 Splines	52	31110-15H00R	2 Flats on Hub	6 Threaded Holes	18 Splines	72
3EA-13-13100R	2 Eared Hub	8 Threaded Holes	18 Splines	52	31110-25H00R	2 Flats on Hub	6 Threaded Holes	18 Splines	72
3EA-13-13101R	2 Eared Hub	8 Threaded Holes	18 Splines	52	31110-40K00R	2 Flats on Hub	6 Threaded Holes	14 Splines	66
3EB-13-11020R	2 Eared Hub	8 Threaded Holes	18 Splines	52	31110-41K00R	2 Flats on Hub	6 Threaded Holes	14 Splines	66
3EB-13-12020R	2 Eared Hub	8 Threaded Holes	18 Splines	52	31110-4G000R	2 Flats on Hub	6 Threaded Holes	14 Splines	66
3EB-13-12100R	2 Eared Hub	8 Threaded Holes	18 Splines	52	31110-4G001R	2 Flats on Hub	6 Threaded Holes	14 Splines	66
3EB-13-12101R	2 Eared Hub	8 Threaded Holes	18 Splines	52	31110-4G100R	2 Flats on Hub	6 Threaded Holes	14 Splines	66
3EB-13-22020R	2 Eared Hub	8 Threaded Holes	18 Splines	52	31110-4G101R	2 Flats on Hub	6 Threaded Holes	14 Splines	66
3EB-13-22021R	2 Eared Hub	8 Threaded Holes	18 Splines	52	31110-51H00R	2 Eared Hub	6 Threaded Holes	19 Splines	113
3EB-13-22022R	2 Flats on Hub	8 Threaded Holes	14 Splines	69	31110-65K00R	2 Flats on Hub	6 Threaded Holes	14 Splines	72
3EC-13-11020R	2 Eared Hub	6 Threaded Holes	19 Splines	79	31110-L6000R	2 Eared Hub	6 Threaded Holes	19 Splines	78
3EC-13-11100R	2 Eared Hub	6 Threaded Holes	19 Splines	79					
3EC-13-15020R	2 Eared Hub	6 Threaded Holes	16 Splines	38					

New Torque Converters may be available. Contact your JI Rep. for price & availability.

Photo Reference Section is for use in identification of Converters and does not imply that Converters with similar Reference Numbers are identical.

**Toll Free USA & Canada: 800-321-9983, Mexico: 001-800-561-1897 Fax: 330/342-3895 www.joseph.com**

All manufacturers' names, numbers, symbols and descriptions are used for reference purpose only, and it is not implied that any part listed is the product of the manufacturer.



# Remanufactured Torque Converters Steel Welded

Part Number	Hub	Mounting	Splines	Photo Ref	Part Number	Hub	Mounting	Splines	Photo Ref
<b>Nissan continued</b>					<b>TCM continued</b>				
31110-L6800R	2 Eared Hub	6 Threaded Holes	13 Splines	59	BK-651150000R	Geared Hub	6 Threaded Holes	19 Splines	76
31110-L9000R	Geared Hub	6 Threaded Holes	19 Splines	74	BK-6511500001R	Geared Hub	6 Threaded Holes	19 Splines	76
<b>Owatonna</b>					<b>TCM continued</b>				
420-28407R	2 Flats on Hub	4 Studs	26 Splines	No Photo	BK-654950000R	Geared Hub	6 Threaded Holes	19 Splines	76
<b>Pettibone</b>					<b>TCM continued</b>				
40059R	4 Eared Hub	6 Mounting Nuts	19 Splines	28	BK-6549500001R	2 Eared Hub	6 Threaded Holes	16 Splines	45
44300R	2 Eared Hub	6 Mounting Nuts	29 Splines	29	BK-6549929200R	2 Eared Hub	6 Threaded Holes	16 Splines	45
6778111R	N/A	N/A	17 Splines	No Photo	BK-655150000R	2 Eared Hub	6 Threaded Holes	16 Splines	No Photo
C9ZZ7902AR	2 Flats on Hub	4 Studs	29 Splines	30	BK-6551500001R	2 Eared Hub	6 Threaded Holes	16 Splines	No Photo
LA1729-1R	2 Eared Hub	6 Mounting Nuts	29 Splines	43	BK-6551929200R	2 Eared Hub	6 Threaded Holes	16 Splines	No Photo
PAP7902BR	2 Flats on Hub	4 Studs	29 Splines	31	BK-655750000R	2 Eared Hub	6 Threaded Holes	19 Splines	78
SA840-4R	4 Eared Hub	6 Mounting Nuts	19 Splines	28	BK-6557500001R	2 Eared Hub	6 Threaded Holes	19 Splines	78
SA860-1R	4 Eared Hub	6 Mounting Nuts	19 Splines	27	BK-6557931520R	2 Eared Hub	6 Threaded Holes	19 Splines	78
SH860-1R	4 Eared Hub	6 Mounting Nuts	19 Splines	27	BK-659350000R	Geared Hub	6 Threaded Holes	19 Splines	74
<b>Philift</b>					<b>TCM continued</b>				
TRA972R	4 Eared Hub	6 Mounting Nuts	19 Splines	28	BK-6593500001R	Geared Hub	6 Threaded Holes	19 Splines	74
<b>Prime Mover</b>					<b>TCM continued</b>				
P12488R	4 Eared Hub	6 Mounting Nuts	18 Splines	No Photo	BK-659550000R	2 Eared Hub	6 Threaded Holes	16 Splines	80
<b>Sellick</b>					<b>TCM continued</b>				
131658R	2 Eared Hub	6 Mounting Nuts	29 Splines	32	BK-6595500001R	2 Eared Hub	6 Threaded Holes	16 Splines	80
220796R	2 Eared Hub	6 Thick Mounting Nuts	17 Splines	25	BK-65955C000R	2 Eared Hub	6 Threaded Holes	16 Splines	80
<b>Shuttle Lift</b>					<b>TCM continued</b>				
S27478R	2 Eared Hub	6 Mounting Nuts	29 Splines	29	BK-666950000R	Geared Hub	6 Threaded Holes	19 Splines	49
S614297R	2 Eared Hub	6 Mounting Nuts	29 Splines	29	BK-66F850000R	Removable Hub	6 Threaded Holes	19 Splines	62
<b>Tailift</b>					<b>Toyota</b>				
22560417R	2 Eared Hub	6 Threaded Holes	18 Splines	108	32101-33900-71R	Geared Hub	8 Threaded Holes	20 Splines	92
<b>TCI</b>					<b>Toyota</b>				
44370R	2 Eared Hub	6 Mounting Nuts	29 Splines	32	32210-12620-71R	2 Flats on Hub	6 Threaded Holes	14 Splines	95
<b>TCM</b>					<b>Toyota</b>				
112T2-52031R	4 Eared Hub	6 Threaded Holes	18 Splines	90	32210-23032-71R	4 Eared Hub	6 Mounting Nuts	18 Splines	98
114T3-80401R	2 Eared Hub	6 Threaded Holes	18 Splines	6	32210-23350-71R	4 Eared Hub	6 Mounting Nuts	18 Splines	109
115E3-80501R	Geared Hub	6 Threaded Holes	19 Splines	44	32210-23630-71R	4 Eared Hub	6 Mounting Nuts	18 Splines	98
115G3-80212R	Geared Hub	6 Threaded Holes	14 Splines	47	32210-U1130-71R	2 Flats on Hub	6 Threaded Holes	14 Splines	95
115G3-80213R	Geared Hub	6 Threaded Holes	14 Splines	47	<b>White Lift Trucks</b>				
12163-80301R	Geared Hub	6 Threaded Holes	19 Splines	44	20-3010040R	4 Eared Hub	6 Mounting Nuts	19 Splines	27
12163-80302AR	Geared Hub	6 Threaded Holes	19 Splines	44	20-3010506R	4 Eared Hub	6 Mounting Nuts	19 Splines	28
12163-80302R	Geared Hub	6 Threaded Holes	19 Splines	44	20-3010507R	4 Eared Hub	6 Mounting Nuts	19 Splines	28
124S3-80301R	2 Eared Hub	6 Threaded Holes	18 Splines	58	20-3010508R	4 Eared Hub	6 Mounting Nuts	19 Splines	28
124U3-80211R	Removable Hub	6 Threaded Holes	19 Splines	62	20-3010509R	4 Eared Hub	6 Mounting Nuts	19 Splines	28
134G3-80301R	2 Eared Hub	6 Threaded Holes	14 Splines	125	20-3010510R	4 Eared Hub	6 Mounting Nuts	19 Splines	28
BK-650450000R	2 Eared Hub	6 Threaded Holes	18 Splines	No Photo	35A10506R	4 Eared Hub	6 Mounting Nuts	19 Splines	28
BK-6504500001R	2 Eared Hub	6 Threaded Holes	18 Splines	No Photo	35A10608R	4 Eared Hub	6 Mounting Nuts	19 Splines	28
BK-6504931521R	2 Eared Hub	6 Threaded Holes	18 Splines	No Photo	35A10713R	4 Eared Hub	6 Mounting Nuts	19 Splines	28
					35A314R	4 Eared Hub	6 Mounting Nuts	19 Splines	28
					35A5730R	4 Eared Hub	6 Mounting Nuts	19 Splines	28
					40A313R	4 Eared Hub	6 Mounting Nuts	19 Splines	28
					<b>Wiggins</b>				
					164609R	Smooth Hub w/25 Splines in ID	6 Mounting Nuts	29 Splines	16
					200130R	Smooth Hub w/25 Splines in ID	6 Mounting Nuts	29 Splines	16
					200141R	2 Eared Hub	6 Mounting Nuts	29 Splines	32
					200157R	2 Eared Hub	6 Mounting Nuts	17 Splines	18
					608658R	2 Eared Hub	6 Mounting Nuts	29 Splines	43
					721745R	2 Eared Hub	6 Mounting Nuts	17 Splines	18

New Torque Converters may be available. Contact your JI Rep. for price & availability.

Photo Reference Section is for use in identification of Converters and does not imply that Converters with similar Reference Numbers are identical.

**Toll Free USA & Canada: 800-321-9983, Mexico: 001-800-561-1897 Fax: 330/342-3895 www.joseph.com**

All manufacturers' names, numbers, symbols and descriptions are used for reference purpose only, and it is not implied that any part listed is the product of the manufacturer.

Copyright 2005, Joseph Industries, Inc.

# Remanufactured Torque Converters Steel Welded



Part Number	Hub	Mounting	Splines	Photo Ref	Part Number	Hub	Mounting	Splines	Photo Ref
<b>Windham</b>					<b>Yale continued</b>				
2219R	2 Eared Hub	6 Mounting Nuts	29 Splines	29	5800041-04R	Smooth Hub w/36 Splines in ID	4 Mounting Pads	26 Splines	10
7795R	2 Eared Hub	6 Mounting Nuts	29 Splines	43	5800142-79R	N/A	3 Oblong Pads	19 Splines	No Photo
<b>Yale</b>					5800182-66R	Smooth Hub w/50 Splines in ID	4 Round Nuts	29 Splines	102
0005128-00R	Smooth Hub	8 Studs	19 Splines	34	5800182-67R	Smooth Hub w/50 Splines in ID	3 Mounting Pads	19 Splines	82
0005138-00R	Smooth Hub	4 Mounting Pads w/Bushing in ID	19 Splines	14	5800182-69R	Smooth Hub w/50 Splines in ID	3 Mounting Pads	19 Splines	82
0005139-00R	Smooth Hub	8 Studs	19 Splines	34	5800276-52R	2 Eared Hub	3 Oblong Pads	19 Splines	123
0212590-00R	Smooth Hub	4 Mounting Pads w/Bushing in ID	19 Splines	21	9008428-00R	2 Flats on Hub	6 Threaded Holes	18 Splines	88
0541647-00R	Smooth Hub	8 Studs	19 Splines	34	9008428-01R	2 Flats on Hub	6 Threaded Holes	18 Splines	88
0616534-00R	Smooth Hub	8 Studs	19 Splines	34	9009668-50R	Geared Hub	6 Threaded Holes	19 Splines	54
0618429-00R	Smooth Hub	8 Studs	19 Splines	34	9010648-01R	2 Eared Hub	6 Threaded Holes	20 Splines	53
0642720-00R	Smooth Hub W	4 Mounting Pads w/Bushing in ID	19 Splines	14	9010658-01R	2 Eared Hub	6 Threaded Holes	20 Splines	53
0805287-00R	4 Eared Hub	6 Mounting Nuts	19 Splines	28	9011988-01R	2 Eared Hub	6 Threaded Holes	20 Splines	40
1341474-00R	4 Eared Hub	6 Mounting Nuts	19 Splines	28	9012108-50R	Geared Hub	6 Threaded Holes	19 Splines	54
2047168-00R	4 Eared Hub	6 Mounting Nuts	19 Splines	28	9012348-01R	2 Eared Hub	6 Threaded Holes	20 Splines	40
4400567-48R	2 Flats	Mounting Tabs on Hub	29 Splines	No Photo	9012358-01R	2 Eared Hub	6 Threaded Holes	20 Splines	40
5002695-00R	Smooth Hub	4 Mounting Pads w/Bushing in ID	19 Splines	22	9014137-00R	2 Flats on Hub	6 Threaded Holes	18 Splines	88
5042987-17R	Smooth Hub	4 Round Nuts w/50 Splines in ID	29 Splines	84	9014578-01R	2 Eared Hub	4 Threaded Holes	20 Splines	94
5059705-47R	Smooth Hub	3 Mounting Pads w/50 Splines in ID	19 Splines	82	9017778-01R	2 Eared Hub	6 Threaded Holes	14 Splines	7
5059705-88R	Smooth Hub	3 Mounting Pads w/50 Splines in ID	19 Splines	82	9018338-01R	2 Flats on Hub	8 Threaded Holes	19 Splines	96
5111084-00R	Straight Hub	4 Mounting Pads	27 Splines	33	9018918-01R	2 Eared Hub	6 Threaded Holes	14 Splines	60
5141258-00R	2 Eared Hub	6 Thick Mounting Nuts	17 Splines	25	9019868-01R	2 Eared Hub	6 Threaded Holes	14 Splines	67
5142456-00R	2 Flats on hub	4 Studs	29 Splines	31	9020488-01R	2 Flats on Hub	6 Threaded Holes	14 Splines	11
5145486-00R	Straight Hub	4 Mounting Pads	27 Splines	33	9022268-01R	2 Flats on Hub	6 Threaded Holes	14 Splines	97
5150108-00R	Smooth Hub	4 Mounting Pads w/Bushing in ID	19 Splines	14	9025137-00R	2 Eared Hub	6 Threaded Holes	20 Splines	53
5153976-03R	2 Eared Hub	6 Mounting Nuts	29 Splines	29	9028636-00R	Smooth Hub	6 Threaded Holes	20 Splines	89
5154068-01R	Slotted Hub	4 Mounting Pads	24 Splines	17	9094356-00R	2 Eared Hub	4 Threaded Holes	20 Splines	94
5154068-03R	Smooth Hub	4 Mounting Pads w/Bushing in ID	19 Splines	21	9094366-00R	2 Eared Hub	4 Round Nuts	20 Splines	56
5154068-04R	4 Eared Hub	6 Mounting Nuts	19 Splines	28	9094376-00R	2 Eared Hub	6 Threaded Holes	14 Splines	7
5154068-05R	Smooth Hub W	4 Mounting Pads w/Bushing in ID	19 Splines	22	9094386-00R	2 Eared Hub	4 Round Nuts	20 Splines	56
5154068-06R	Straight Hub	4 Mounting Pads	27 Splines	33	9102098-50R	Geared Hub	6 Threaded Holes	19 Splines	54
5154068-07R	2 Flats on hub	4 Studs	29 Splines	31	9112826-00R	2 Eared Hub	4 Threaded Holes	20 Splines	94
5158326-01R	2 Eared Hub	6 Mounting Nuts	29 Splines	43	9112846-00R	2 Eared Hub	6 Threaded Holes	14 Splines	7
5160418-91R	2 Flats on Hub	4 Studs	29 Splines	31	9112856-00R	2 Eared Hub	4 Round Nuts	20 Splines	56
5162034-00R	Slotted Hub	4 Mounting Pads	24 Splines	17	9112866-00R	2 Eared Hub	6 Threaded Holes	20 Splines	40
5173574-00R	Smooth Hub	4 Mounting Pads w/Bushing in ID	19 Splines	21	9118986-00R	2 Flats on Hub	8 Threaded Holes	19 Splines	96
5188026-60R	Smooth Hub	3 Mounting Pads w/50 Splines in ID	19 Splines	82	9137186-00R	2 Flats on Hub	6 Threaded Holes	14 Splines	11
5196020-00R	Slotted Hub	4 Mounting Pads	24 Splines	17	9160996-00R	2 Flats on Hub	6 Threaded Holes	14 Splines	97
					9171616-00R	2 Flats on Hub	6 Threaded Holes	14 Splines	97
					9184216-00R	2 Flats on Hub	4 Mounting Pads	14 Splines	104
					9189146-00R	2 Flats on Hub	8 Threaded Holes	19 Splines	96
					9195746-00R	2 Flats on Hub	8 Threaded Holes	19 Splines	96

If you don't see the part number you're looking for please contact your JI Sales Representative for current availability.

New part numbers are added daily.

New Torque Converters may be available. Contact your JI Rep. for price & availability.

Photo Reference Section is for use in identification of Converters and does not imply that Converters with similar Reference Numbers are identical.

**Toll Free USA & Canada: 800-321-9983, Mexico: 001-800-561-1897 Fax: 330/342-3895 www.joseph.com**

All manufacturers' names, numbers, symbols and descriptions are used for reference purpose only, and it is not implied that any part listed is the product of the manufacturer.



# Remanufactured Torque Converters Aluminum Bolted

Part Number	Hub	Mounting	Splines	Photo Ref
<b>Caterpillar</b>				
1033325R	2 Eared Hub	-	16 Splines	No Photo
<b>Funk</b>				
4045001R	2 Eared Hub	-	17 or 29 Splines	93
4045022R	2 Eared Hub	-	17 or 29 Splines	93
4045027R	2 Eared Hub	-	17 or 29 Splines	93
4045030R	2 Eared Hub	-	17 or 29 Splines	93
4045031R	2 Eared Hub	-	17 or 29 Splines	93
4045070R	Splined Hub	-	29 Splines	No Photo
4045090R	Splined Hub	-	29 Splines	No Photo
4045098R	Splined Hub	-	29 Splines	No Photo
4045405R	Splined Hub	-	29 Splines	No Photo
4045893R				
4045963R				
<b>Hyster</b>				
0158906R	2 Eared Hub	-	17 or 29 Splines	93
0263096R	2 Eared Hub	-	17 or 29 Splines	93
0263097R	2 Eared Hub	-	17 or 29 Splines	93
120210ABR	2 Eared Hub	-	17 or 29 Splines	93
126494R	2 Eared Hub	-	17 or 29 Splines	93
158906R	2 Eared Hub	-	17 or 29 Splines	93
184495R	2 Eared Hub	-	17 or 29 Splines	93
191977R	2 Eared Hub	-	17 or 29 Splines	93
263096R	2 Eared Hub	-	17 or 29 Splines	93
263097R	2 Eared Hub	-	17 or 29 Splines	93
309804R	Splined Hub	-	29 Splines	No Photo
<b>Kalmar AC</b>				
4920000R	2 Eared Hub	-	14 Splines	No Photo
<b>Mitsubishi</b>				
91123-10030R	2 Eared Hub	-	14 Splines	No Photo
91223-00030R	2 Eared Hub	-	14 Splines	No Photo
91223-10030R	2 Eared Hub	-	14 Splines	No Photo
91823-10050R	2 Eared Hub	-	16 Splines	No Photo
91823-10051R	2 Eared Hub	-	16 Splines	114
91823-10052R	2 Eared Hub	-	16 Splines	115
91823-10060R	2 Eared Hub	-	16 Splines	116
91823-10064R	2 Eared Hub	-	16 Splines	No Photo
92023-20030R	36 Spline Hub	-	21 Splines	No Photo
92023-20031R	36 Spline Hub	-	21 Splines	No Photo
92322-40010R				117
93723-00020R	2 Eared Hub	-	16 Splines	No Photo
93723-10020R	2 Eared Hub	-	16 Splines	No Photo
<b>Nissan</b>				
31100-11H01R	Flats on Hub	-	18 Splines	No Photo
31100-L1010R	Flats on Hub	-	18 Splines	No Photo
31100-L1011R	Flats on Hub	-	18 Splines	No Photo

Part Number	Hub	Mounting	Splines	Photo Ref
<b>Pettibone</b>				
25687-7R	2 Eared Hub	-	17 or 29 Splines	93
3380R	2 Eared Hub	-	17 or 29 Splines	93
846129R	2 Eared Hub	-	17 or 29 Splines	93
LL2859-5R	2 Eared Hub	-	17 or 29 Splines	93
<b>Silent Hoist</b>				
BB14075R	2 Eared Hub	-	17 or 29 Splines	93
<b>TCM</b>				
13042-50211R				No Photo
AE-602811-102R				No Photo
<b>Toyota</b>				
32210-12011-71R				
	4 Eared Hub	-		No Photo
32210-12051-71R				
	4 Eared Hub	-	18 Splines	No Photo
32210-12610-71R				
	4 Eared Hub	-		No Photo
32210-13030-71R				
	4 Eared Hub	-	18 Splines	No Photo
32210-13031-71R				
	4 Eared Hub	-	18 Splines	No Photo
32210-23030-71R				
	4 Eared Hub	-	18 Splines	No Photo
32210-23031-71R				
	4 Eared Hub	-	18 Splines	No Photo
32210-31721-71R				
32210-32891-71R				
32210-32871-71R				
	2 Eared Hub	-		
40101-30261-71R				
<b>Windham</b>				
2224R	2 Eared Hub	-	17 or 29 Splines	93
<b>Yale</b>				
0590760-00R				
	2 Eared Hub	-	17 or 29 Splines	93
2054263-00R				
	2 Eared Hub	-	17 or 29 Splines	93
6955127-00R				
	2 Eared Hub	-	17 or 29 Splines	93

New Torque Converters may be available. Contact your JI Rep. for price & availability.

Photo Reference Section is for use in identification of Converters and does not imply that Converters with similar Reference Numbers are identical.

**Toll Free USA & Canada: 800-321-9983, Mexico: 001-800-561-1897 Fax: 330/342-3895 www.joseph.com**

All manufacturers' names, numbers, symbols and descriptions are used for reference purpose only,  
and it is not implied that any part listed is the product of the manufacturer.

Copyright 2005, Joseph Industries, Inc.

**Photo Ref.**

- 1** Size 11" Borg Warner  
 Hub 2 Eared Hub  
 Pilot .750" OD  
 Mounting 6 Mounting Nuts  
 Stator Splines 29  
 Turbine Splines 17



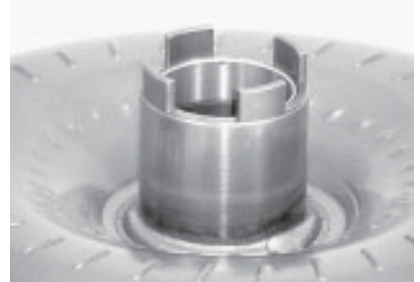
**Comment:** Code letters: ND, NO, RR, RP, NH, JC, JV, LX; Also available with cooling shroud.

- 2** Size 11" Borg Warner  
 Hub 4 Eared Hub W/Bushing  
 Pilot .750" OD  
 Mounting 6 Mounting Nuts  
 Stator Splines 19  
 Turbine Splines 15



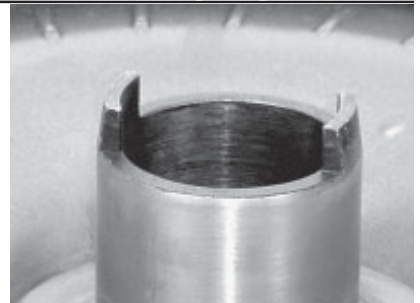
**Comment:** Code Letters: KY, HU, FV, RW, KX, FW, HP, RU, KM, PB, RV

- 3** Size 11" Borg Warner  
 Hub 4 Eared Hub W/Bushing  
 Pilot .750" OD  
 Mounting 6 Mounting Straps  
 Stator Splines 19  
 Turbine Splines 15



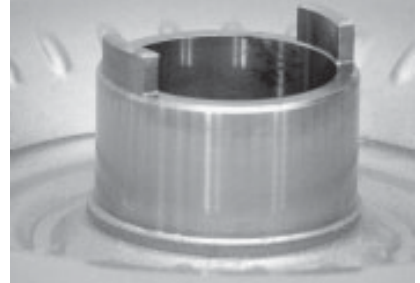
**Comment:** Code Letters: EG, ET, FC, FD, FF, KF, FE, KZ, RX

- 4** Size 11" Borg Warner  
 Hub 2 Eared Hub  
 Pilot .750" OD  
 Mounting 6 Mounting Nuts  
 Stator Splines 29  
 Turbine Splines 17



**Comment:** Code Letters: FP, ME, MZ, RB, RF, BB, DG, DA, PY, LK, RE, NG, PZ

- 5** Size 13" Borg Warner  
 Hub 2 Eared Hub  
 Pilot 1.703" OD x .50" L  
 Mounting 6 Mounting Nuts  
 Stator Splines 22  
 Turbine Splines 18



**Comment:** Color Code: 2 blue and 1 green stripe or 2 blue and 1 brown stripe

New Torque Converters may be available. Contact your JI Rep. for price & availability.

Photo Reference Section is for use in identification of Converters and does not imply that Converters with similar Reference Numbers are identical.

**Toll Free USA & Canada: 800-321-9983, Mexico: 001-800-561-1897 Fax: 330/342-3895 [www.joseph.com](http://www.joseph.com)**

All manufacturers' names, numbers, symbols and descriptions are used for reference purpose only,  
 and it is not implied that any part listed is the product of the manufacturer.

Copyright 2005, Joseph Industries, Inc.



# Remanufactured Torque Converters



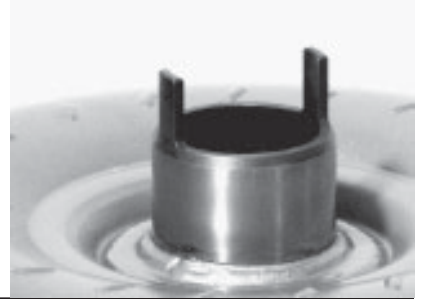
## Photo Ref.

- 6 Size 11" Daikin  
Hub 2 Eared Hub  
Pilot .589" OD x .650" L  
Mounting 6 Threaded Holes  
Stator Splines 19  
Turbine Splines 18



**Comment:** No dowel pins at drive plate mounting

- 7 Size 11" Mazda  
Hub 2 Eared Hub  
Pilot .589" OD x .58" L  
Mounting 6 Threaded Holes  
Stator Splines 19  
Turbine Splines 14



- 8 Size 13" Borg Warner  
Hub Splined Hub  
Pilot 1.701" OD  
Mounting 3 Mounting Pads  
Stator Splines 19  
Turbine Splines 15



**Comment:** Color Codes: 2 black and 1 brown stripe or 2 yellow and 1 orange stripe

- 9 Size 11.5" Borg Warner  
Hub Splined Hub  
Pilot 2.044" OD hollow  
Mounting 6 Mounting Nuts  
Stator Splines 19  
Turbine Splines 20



**Comment:** Code letters: UH, WH, UK, VY

- 10 Size 12.5" Sachs  
Hub Smooth Hub W/ 36 Splines in I.D.  
Pilot 1.571" OD x .68" L  
Mounting 4 Mounting Pads  
Stator Splines 22  
Turbine Splines 26



**Comment:** 181001 stamped on bottom cover - 147000 stamped on impeller cover

New Torque Converters may be available. Contact your JI Rep. for price & availability.

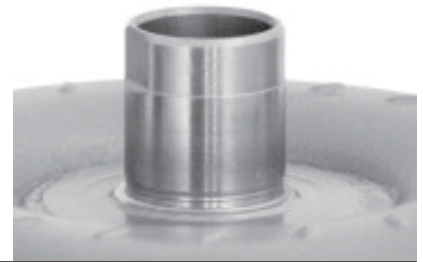
Photo Reference Section is for use in identification of Converters and does not imply that Converters with similar Reference Numbers are identical.

**Toll Free USA & Canada: 800-321-9983, Mexico: 001-800-561-1897 Fax: 330/342-3895 [www.joseph.com](http://www.joseph.com)**

All manufacturers' names, numbers, symbols and descriptions are used for reference purpose only, and it is not implied that any part listed is the product of the manufacturer.

**Photo Ref.**

- 11** Size 10.5" Mazda  
 Hub 2 Flats on Hub  
 Pilot .589" OD x .60"L  
 Mounting 6 Threaded Holes  
 Stator Splines 30  
 Turbine Splines 14



**Comment:** Drive Plate Mounting Holes at 60 degree interval

- 12** Size 12.5" Sachs  
 Hub Smooth Hub W/Seal Ring Groove  
 Pilot 1.572" OD x 1.045"  
 Mounting 4 Mounting Pads  
 Stator Splines 46  
 Turbine Splines 30



**Comment:** 040508 or 040401 stamped on bottom cover - 057003 or 050000 stamped on impeller cover

- 13** Size 13" Borg Warner  
 Hub Slotted Hub  
 Pilot 1.702" OD  
 Mounting 6 Mounting Pads  
 Stator Splines 27  
 Turbine Splines 30



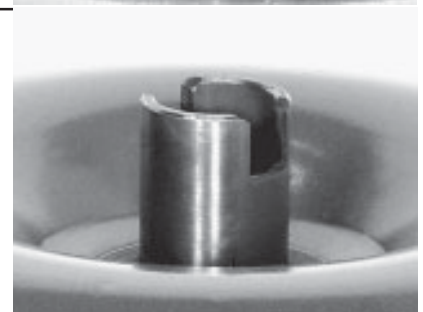
**Comment:** Color code: 1 green stripe and 1 white stripe or 1 purple stripe and one white stripe. Allison application

- 14** Chrysler  
 Hub Smooth Hub W/Bushing in I.D.  
 Pilot 1.812" OD  
 Mounting 4 Mounting Pads  
 Stator Splines 27  
 Turbine Splines 19



**Comment:** Unit may have cooling fins

- 15** Chrysler  
 Hub Slotted Hub  
 Pilot 1.812" OD  
 Mounting 4 Mounting Pads  
 Stator Splines 29  
 Turbine Splines 27



**Comment:** Also available with 122 tooth ring gear

New Torque Converters may be available. Contact your JI Rep. for price & availability.

Photo Reference Section is for use in identification of Converters and does not imply that Converters with similar Reference Numbers are identical.

**Toll Free USA & Canada: 800-321-9983, Mexico: 001-800-561-1897 Fax: 330/342-3895 [www.joseph.com](http://www.joseph.com)**

All manufacturers' names, numbers, symbols and descriptions are used for reference purpose only, and it is not implied that any part listed is the product of the manufacturer.

Copyright 2005, Joseph Industries, Inc.

# Remanufactured Torque Converters



## Photo Ref.

- 16 Size 11" Borg Warner  
Hub Smooth Hub W/25 Splines in I.D.  
Pilot .750" OD  
Mounting 6 Mounting Nuts  
Stator Splines 29  
Turbine Splines 29



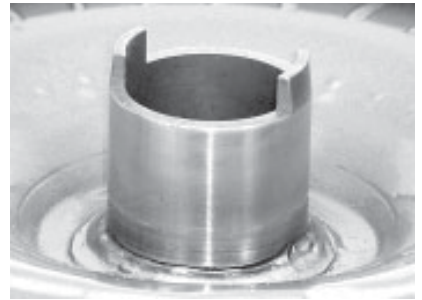
**Comment:** Code Letters: SP, VN, SJ, VE

- 17 Chrysler  
Hub Slotted Hub  
Pilot 1.812" OD  
Mounting 4 Mounting Pads  
Stator Splines 27  
Turbine Splines 24



**Comment:** 130 tooth ring gear

- 18 Size 11" Borg Warner  
Hub 2 Eared Hub  
Pilot .750" OD  
Mounting 6 Mounting Nuts  
Stator Splines 29  
Turbine Splines 17



**Comment:** Code Letters: GC, HC, KS, RO, G, GZ; Also available with cooling shroud.

- 19 Ford  
Hub 2 Eared Hub  
Pilot 1.375" OD  
Mounting 4 Studs  
Stator Splines 29  
Turbine Splines 29



- 20 Size 11" Borg Warner  
Hub Removable Geared Hub W/8 Allen Head Bolts  
Pilot .787" OD  
Mounting 4 Square Mounting Nuts  
Stator Splines 19  
Turbine Splines 15



**Comment:** Code Letters: TC

New Torque Converters may be available. Contact your JI Rep. for price & availability.

Photo Reference Section is for use in identification of Converters and does not imply that Converters with similar Reference Numbers are identical.

**Toll Free USA & Canada: 800-321-9983, Mexico: 001-800-561-1897 Fax: 330/342-3895 [www.joseph.com](http://www.joseph.com)**

All manufacturers' names, numbers, symbols and descriptions are used for reference purpose only,  
and it is not implied that any part listed is the product of the manufacturer.

**Photo Ref.**

- 21** Chrysler  
 Hub Smooth Hub W/Bushing in I.D.  
 Pilot 1.812" OD  
 Mounting 4 Mounting Pads  
 Stator Splines 27  
 Turbine Splines 19



**Comment:** Large body unit - 130 tooth x .5" thick ring gear

- 22** Chrysler  
 Hub Smooth Hub W/Bushing in I.D.  
 Pilot 1.812" OD  
 Mounting 4 Mounting Pads  
 Stator Splines 27  
 Turbine Splines 19



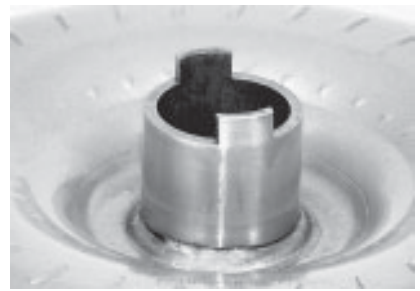
**Comment:** Small body unit - 130 tooth x 1" thick ring gear

- 23** Size 11" Borg Warner  
 Hub Removable Geared Hub W/8 Allen Head Bolts  
 Pilot .750" OD  
 Mounting 4 Thick Square Mounting Nuts  
 Stator Splines 29  
 Turbine Splines 15



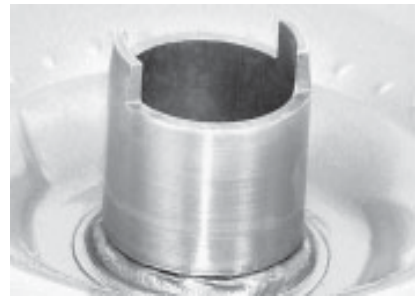
**Comment:** Code Letters: SX

- 24** Size 11" Borg Warner  
 Hub 2 Eared Hub  
 Pilot .750" OD  
 Mounting 6 Mounting Nuts  
 Stator Splines 29  
 Turbine Splines 17



**Comment:** Code Letters: NU, NT, OP, RM, RK, PP, OO, RL, ST, PC, RS, SS

- 25** Size 11" Borg Warner or 11" Sachs  
 Hub 2 Eared Hub  
 Pilot .750" OD  
 Mounting 6 Thick Mounting Nuts  
 Stator Splines 29  
 Turbine Splines 17



**Comment:** Code Letters Borg Warner: KG, PW, SL, SR, SK  
 Code Numbers Sachs: 314002 top/187002 bottom or 314001 top / 187001 bottom

New Torque Converters may be available. Contact your JI Rep. for price & availability.

Photo Reference Section is for use in identification of Converters and does not imply that Converters with similar Reference Numbers are identical.

**Toll Free USA & Canada: 800-321-9983, Mexico: 001-800-561-1897 Fax: 330/342-3895 [www.joseph.com](http://www.joseph.com)**

All manufacturers' names, numbers, symbols and descriptions are used for reference purpose only,  
 and it is not implied that any part listed is the product of the manufacturer.

Copyright 2005, Joseph Industries, Inc.

# Remanufactured Torque Converters



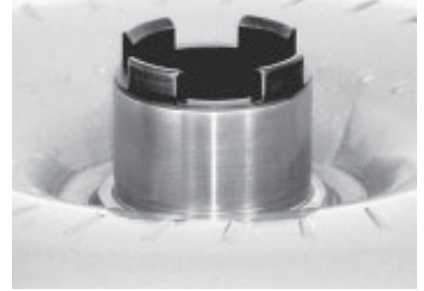
## Photo Ref.

- 26 Size 11" Borg Warner  
Hub 4 Eared Thin Hub  
Pilot .750" OD  
Mounting 6 Mounting Straps  
Stator Splines 19  
Turbine Splines 19



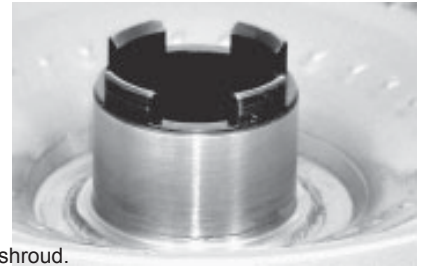
**Comment:** CODE Letters: DJ, AE, F, PR, AD, EC, G, GF; Also available with cooling shroud.

- 27 Size 11" Borg Warner  
Hub 4 Eared Hub  
Pilot .750" OD  
Mounting 6 Mounting Nuts  
Stator Splines 19  
Turbine Splines 19



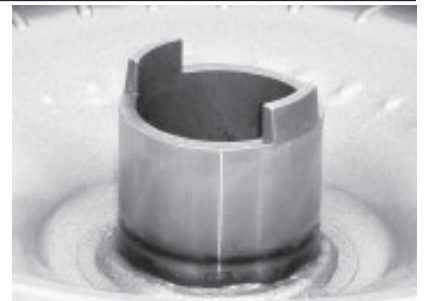
**Comment:** Code letters: GC, HM, PV, GD, HL, OS, NM, SE, NL, PF, RT, LR

- 28 Size 11" Borg Warner  
Hub 4 Eared Hub  
Pilot .750" OD  
Mounting 6 Mounting Nuts  
Stator Splines 19  
Turbine Splines 19



**Comment:** Code Letters: GE, GW, JH, LC, NJ, NV, OA, OV, PN, PU, PJ, SH, PV, GB, HN, JT, PH, KW, FU, PO, PL, PW, MD, NK, LP, PK; Also available with cooling shroud.

- 29 Size 11" Borg Warner  
Hub 2 Eared Hub  
Pilot .750" OD  
Mounting 6 Mounting Nuts  
Stator Splines 29  
Turbine Splines 29



**Comment:** Code Letters: FY, HW, RA, RN, PM, HA, HK, KU, PM, LA, RZ;  
Also available with cooling shroud.

- 30 Ford  
Hub 2 Flats on hub  
Pilot 1.375" OD  
Mounting 4 Studs  
Stator Splines 32  
Turbine Splines 29



**Comment:** May have dimples on impeller cover

New Torque Converters may be available. Contact your JI Rep. for price & availability.

Photo Reference Section is for use in identification of Converters and does not imply that Converters with similar Reference Numbers are identical.

**Toll Free USA & Canada: 800-321-9983, Mexico: 001-800-561-1897 Fax: 330/342-3895 [www.joseph.com](http://www.joseph.com)**

All manufacturers' names, numbers, symbols and descriptions are used for reference purpose only,  
and it is not implied that any part listed is the product of the manufacturer.

Copyright 2005, Joseph Industries, Inc.

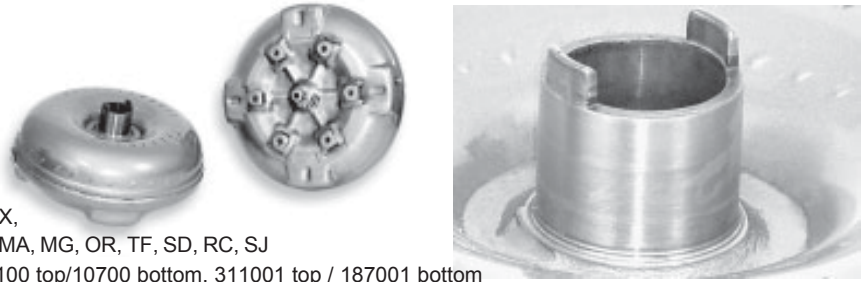
**Photo Ref.**

- 31** Ford  
 Hub 2 Flats on hub  
 Pilot 1.375" OD  
 Mounting 4 Studs  
 Stator Splines 32  
 Turbine Splines 29



**Comment:** May have dimples on impeller cover

- 32** Size 11" Borg Warner or 11" Sachs  
 Hub 2 Eared Hub  
 Pilot .750" OD  
 Mounting 6 Mounting Nuts  
 Stator Splines 29  
 Turbine Splines 29



**Comment:** Code Letters Borg Warner: NT, RM, SF, PX, NH, KU, HG, HA, RN, PG, RO, LB, NS, RD, SR, SN, TG, MA, MG, OR, TF, SD, RC, SJ  
 Code Numbers Sachs: 113001 top / 11500 bottom, 10100 top/10700 bottom, 311001 top / 187001 bottom

- 33** Chrysler / Yale  
 Hub Straight Hub  
 Pilot 1.812" OD  
 Mounting 4 Mounting Pads  
 Stator Splines 27



**Comment:** 122 Tooth Ring Gear

- 34** Chrysler  
 Hub Smooth Hub  
 Pilot None  
 Mounting 8 Studs  
 Stator Splines 27  
 Turbine Splines 19



**Comment:** 146 tooth ring gear - may have cooling fins

- 35** Size 11" Borg Warner  
 Hub Removable Geared Hub W/8 Allen Head Bolts  
 Pilot .750" OD  
 Mounting 6 Square Mounting Nuts  
 Stator Splines 29  
 Turbine Splines 15



**Comment:** Code Letters: SM

New Torque Converters may be available. Contact your JI Rep. for price & availability.

Photo Reference Section is for use in identification of Converters and does not imply that Converters with similar Reference Numbers are identical.

**Toll Free USA & Canada: 800-321-9983, Mexico: 001-800-561-1897 Fax: 330/342-3895 [www.joseph.com](http://www.joseph.com)**

All manufacturers' names, numbers, symbols and descriptions are used for reference purpose only, and it is not implied that any part listed is the product of the manufacturer.

Copyright 2005, Joseph Industries, Inc.

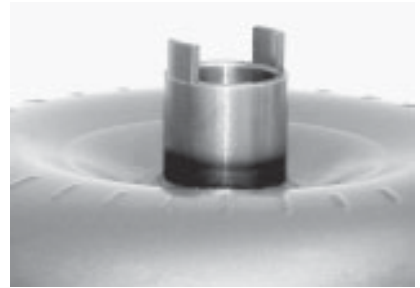
# Remanufactured Torque Converters



## Photo Ref.

36

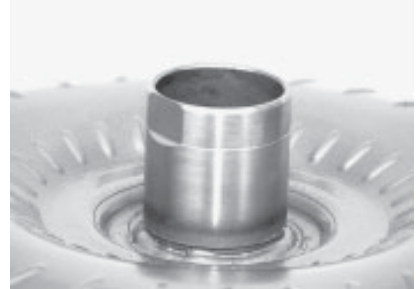
Hub 2 Eared Hub  
Pilot .750" OD  
Mounting Long Round Nuts  
Stator Splines 24



**Comment:** 68 Stamped on Bottom

37

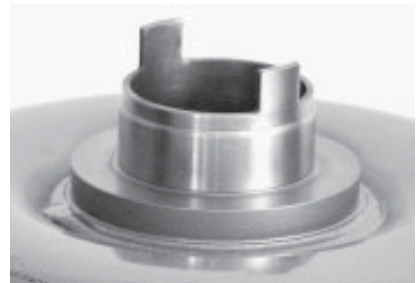
Ford  
Hub 2 Flats on hub  
Pilot 1.375" OD  
Mounting 4 Studs  
Stator Splines 32  
Turbine Splines 29



**Comment:** May have dimples on impeller cover

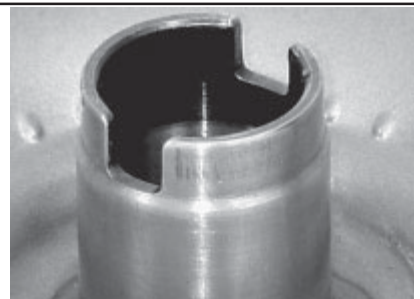
38

Size 12" Komatsu  
Hub 2 Eared Hub  
Pilot Removable type  
Mounting 6 Threaded Holes  
Stator Splines 18  
Turbine Splines 16



39

Size 11" Sachs  
Hub Slotted Hub  
Pilot 1.181" & 1.148" OD  
Mounting 4 Mounting Pads  
Stator Splines 38  
Turbine Splines 27



**Comment:** 081003 stamped on the bottom cover

40

Size 11" Mazda  
Hub 2 Eared Hub  
Pilot .589" OD x .58"L  
Mounting 6 Threaded Holes  
Stator Splines 19  
Turbine Splines 20



**Comment:** Code Letters: EH, DH, EK, DK, ET, EG

New Torque Converters may be available. Contact your JI Rep. for price & availability.

Photo Reference Section is for use in identification of Converters and does not imply that Converters with similar Reference Numbers are identical.

**Toll Free USA & Canada: 800-321-9983, Mexico: 001-800-561-1897 Fax: 330/342-3895 [www.joseph.com](http://www.joseph.com)**

All manufacturers' names, numbers, symbols and descriptions are used for reference purpose only, and it is not implied that any part listed is the product of the manufacturer.

Copyright 2005, Joseph Industries, Inc.

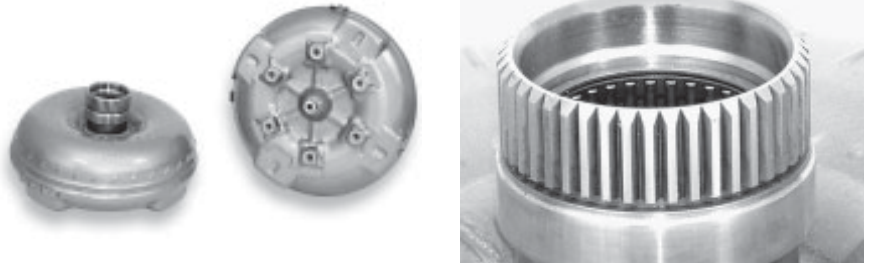
**Photo Ref.**

- 41** Size 13" Borg Warner  
 Hub Smooth Hub W/25 Splines in I.D.  
 Pilot 1.700" OD  
 Mounting 6 Mounting Nuts  
 Stator Splines 20  
 Turbine Splines 29



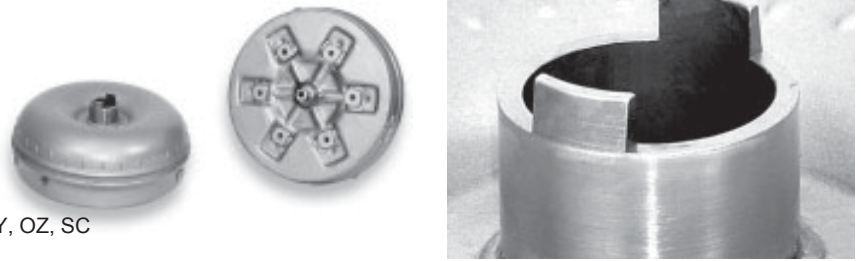
**Comment:** Available in lockup and non-lockup models. Specify color codes

- 42** Size 11" Borg Warner  
 Hub Splined Hub  
 Pilot .750" OD  
 Mounting 6 Mounting Nuts  
 Stator Splines 29  
 Turbine Splines 29



**Comment:** Code Letters: TD, TS, TJ, TA, TN

- 43** Size 11" Borg Warner  
 Hub 2 Eared Hub  
 Pilot .750" OD  
 Mounting 6 Mounting Nuts  
 Stator Splines 29  
 Turbine Splines 29



**Comment:** Code Letters: VB, PD, OY, DY, SB, PA, SY, OZ, SC

- 44** Size 11" Daikin  
 Hub Geared Hub  
 Pilot .589" OD  
 Mounting 6 Threaded Holes  
 Stator Splines 19  
 Turbine Splines 18



**Comment:** Cooling Fins on Converter

- 45** Size 13" Daikin  
 Hub 2 Eared Hub  
 Pilot .787" OD  
 Mounting 6 Threaded Holes  
 Stator Splines 16  
 Turbine Splines 16



**Comment:** 2 dowel pins at drive plate mounting

New Torque Converters may be available. Contact your JI Rep. for price & availability.

Photo Reference Section is for use in identification of Converters and does not imply that Converters with similar Reference Numbers are identical.

**Toll Free USA & Canada: 800-321-9983, Mexico: 001-800-561-1897 Fax: 330/342-3895 [www.joseph.com](http://www.joseph.com)**

All manufacturers' names, numbers, symbols and descriptions are used for reference purpose only,  
 and it is not implied that any part listed is the product of the manufacturer.

Copyright 2005, Joseph Industries, Inc.

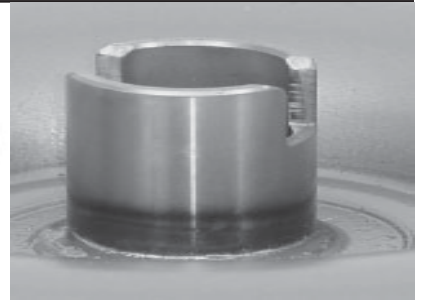


# Remanufactured Torque Converters



## Photo Ref.

- 46 Chrysler  
Hub Slotted Hub  
Pilot 1.812" OD  
Mounting 4 Mounting Pads  
Stator Splines 29  
Turbine Splines 27

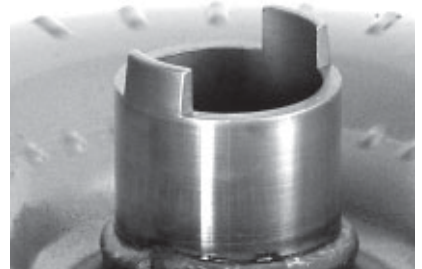


**Comment:** 122 tooth ring gear

- 47 Size 11" Daikin  
Hub Geared Hub  
Pilot 5.89" OD x .650"L  
Mounting 6 Threaded Holes  
Stator Splines 19  
Turbine Splines 14



- 48 Size 11" Sachs or 12" Sachs  
Hub 2 Eared Hub  
Pilot .787" OD or 1.177" OD x 1.19"  
Mounting 4 Mounting Tabs  
Stator Splines 19 or 22  
Turbine Splines 29



**Comment:** 11" Sachs - 063103 stamped on bottom cover;  
12" Sachs - 046405 stamped on bottom cover - 046407 stamped on impeller cover

- 49 Size 13" Daikin  
Hub Geared Hub  
Pilot .982" OD x 1.10" L  
Mounting 6 Threaded Holes  
Stator Splines 18  
Turbine Splines 19



NO PHOTO AVAILABLE

**Comment:** 2 dowel pins at drive plate mounting

- 50 Size 12.5" Sachs  
Hub 2 Eared Hub  
Pilot .787" OD x .500" L  
Mounting 4 Mounting Pads  
Stator Splines 21  
Turbine Splines 19



**Comment:** 110001 stamped on bottom cover

New Torque Converters may be available. Contact your JI Rep. for price & availability.

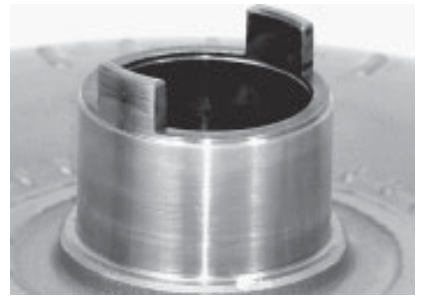
Photo Reference Section is for use in identification of Converters and does not imply that Converters with similar Reference Numbers are identical.

**Toll Free USA & Canada: 800-321-9983, Mexico: 001-800-561-1897 Fax: 330/342-3895 www.joseph.com**

All manufacturers' names, numbers, symbols and descriptions are used for reference purpose only,  
and it is not implied that any part listed is the product of the manufacturer.

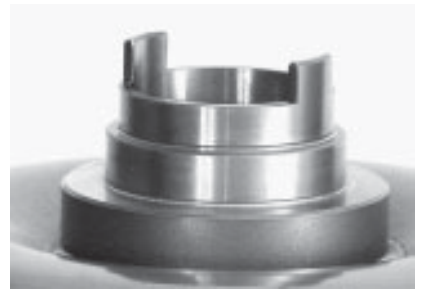
**Photo Ref.**

- 51** Size 11.5" Sachs  
 Hub 2 Eared Hub  
 Pilot .787" OD x .500"L  
 Mounting 4 Mounting Tabs  
 Stator Splines 21  
 Turbine Splines 19



**Comment:** 111001 or 111002 stamped on bottom cover

- 52** Size 11" Komatsu  
 Hub 2 Eared Hub  
 Pilot Removable type  
 Mounting 8 Threaded Holes  
 Stator Splines 18  
 Turbine Splines 18



**Comment:** Can have 4, 2 or 0 dowel pins at drive plate mounting

- 53** Size 11" Mazda  
 Hub 2 Eared Hub  
 Pilot .589" OD x .90"L  
 Mounting 6 Threaded Holes  
 Stator Splines 19  
 Turbine Splines 20



**Comment:** Code Letters: DM, DU, DX

- 54** Size 13" Mazda  
 Hub Geared Hub  
 Pilot See Comment  
 Mounting 6 Threaded Holes  
 Stator Splines 18  
 Turbine Splines 19



**Comment:** 3 models - pilot OD .750 or .589 - has 4 dowel pins

- 55** Size 11" Borg Warner  
 Hub Splined Hub  
 Pilot .787" OD  
 Mounting 4 Mounting Nuts  
 Stator Splines 19  
 Turbine Splines 20



**Comment:** Code Letters: TK

New Torque Converters may be available. Contact your JI Rep. for price & availability.

Photo Reference Section is for use in identification of Converters and does not imply that Converters with similar Reference Numbers are identical.

**Toll Free USA & Canada: 800-321-9983, Mexico: 001-800-561-1897 Fax: 330/342-3895 [www.joseph.com](http://www.joseph.com)**

All manufacturers' names, numbers, symbols and descriptions are used for reference purpose only,  
 and it is not implied that any part listed is the product of the manufacturer.

Copyright 2005, Joseph Industries, Inc.

# Remanufactured Torque Converters



## Photo Ref.

- 56 Size 11" Mazda  
Hub 2 Eared Hub  
Pilot .589" OD x .60"L  
Mounting 4 Round Nuts  
Stator Splines 19  
Turbine Splines 20



**Comment:** Code Letters: QE

- 57 Size 13" Daikin  
Hub Geared Hub  
Pilot .787" OD x 1.770 L  
Mounting 8 Threaded Holes  
Stator Splines Bottom 20 Top 31  
Turbine Splines 19



**Comment:** Dual Stator Unit

- 58 Size 11" Daikin  
Hub 2 Eared Hub  
Pilot .589" OD x .635" L  
Mounting 6 Threaded Holes  
Stator Splines 19  
Turbine Splines 18



**Comment:** Could have cooling fins

- 59 Size 13" Daikin  
Hub 2 Ear  
Pilot .787" OD x 1.50" L  
Mounting 6 Threaded Holes  
Stator Splines 18  
Turbine Splines 13



**Comment:** Fits early style F03 series cushion tire truck

- 60 Size 11" Mazda  
Hub 2 Eared Hub  
Pilot .589" OD x .58"L  
Mounting 6 Threaded Holes  
Stator Splines 19  
Turbine Splines 14



**Comment:** Code Letters: P or T with 4 digits.

New Torque Converters may be available. Contact your JI Rep. for price & availability.

Photo Reference Section is for use in identification of Converters and does not imply that Converters with similar Reference Numbers are identical.

**Toll Free USA & Canada: 800-321-9983, Mexico: 001-800-561-1897 Fax: 330/342-3895 [www.joseph.com](http://www.joseph.com)**

All manufacturers' names, numbers, symbols and descriptions are used for reference purpose only,  
and it is not implied that any part listed is the product of the manufacturer.

Copyright 2005, Joseph Industries, Inc.

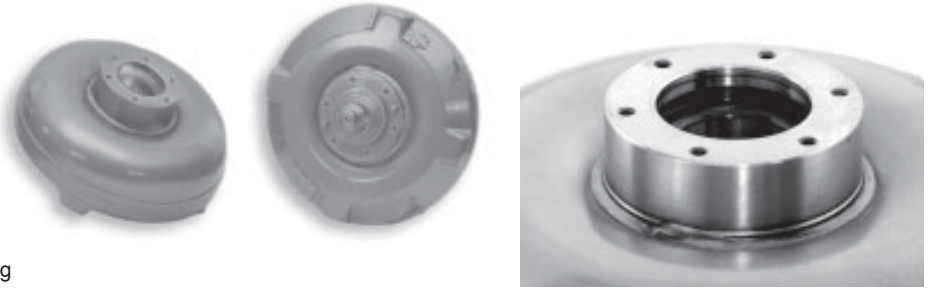
**Photo Ref.**

- 61** Size 12" Borg Warner  
 Hub 2 Eared Hub  
 Pilot .787" OD  
 Mounting 6 Mounting Nuts  
 Stator Splines 21  
 Turbine Splines 19



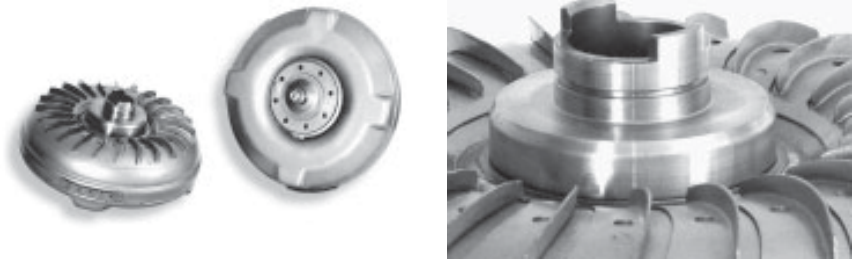
**Comment:** Color coded: 1 pink stripe and 1 purple stripe

- 62** Size 13" Daikin  
 Hub Removable Hub  
 Pilot .982" OD x .982"L  
 Mounting 6 Threaded Holes  
 Stator Splines 18  
 Turbine Splines 19



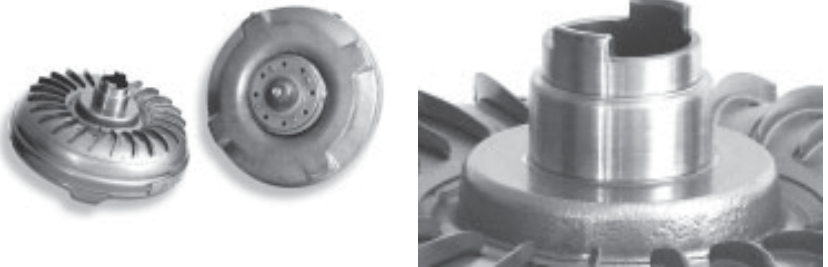
**Comment:** 2 dowel pins at drive plate mounting

- 63** Size 11" Daikin  
 Hub 2 Eared Hub  
 Pilot .589" OD x .600"L  
 Mounting 8 Threaded Holes  
 Stator Splines 18  
 Turbine Splines 14



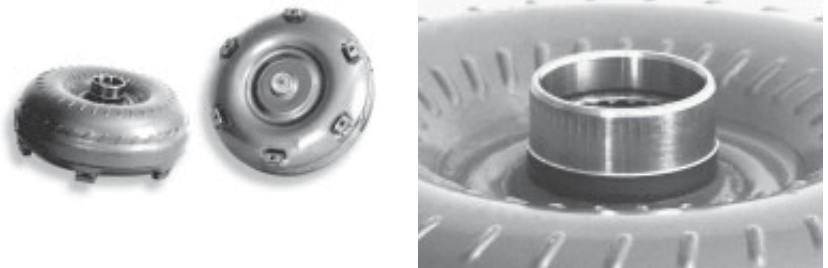
**Comment:** No dowel pins at drive plate mounting

- 64** Size 11" Daikin  
 Hub 2 Eared Hub  
 Pilot .589" OD x .580" L  
 Mounting 8 Threaded Holes  
 Stator Splines 18  
 Turbine Splines 14



**Comment:** 4 dowel pins at drive plate mounting

- 65** Size 13" Borg Warner  
 Hub Smooth Hub W/25 Splines in I.D.  
 Pilot 1.702" OD  
 Mounting 6 Mounting Pads  
 Stator Splines 24  
 Turbine Splines 24



**Comment:** Color Code: 2 black stripes

New Torque Converters may be available. Contact your JI Rep. for price & availability.

Photo Reference Section is for use in identification of Converters and does not imply that Converters with similar Reference Numbers are identical.

**Toll Free USA & Canada: 800-321-9983, Mexico: 001-800-561-1897 Fax: 330/342-3895 [www.joseph.com](http://www.joseph.com)**

All manufacturers' names, numbers, symbols and descriptions are used for reference purpose only,  
 and it is not implied that any part listed is the product of the manufacturer.

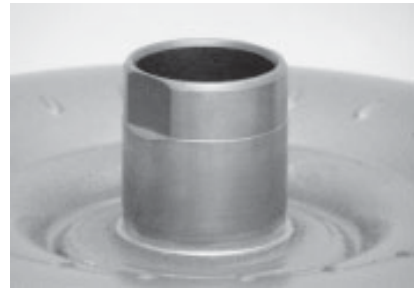
Copyright 2005, Joseph Industries, Inc.

# Remanufactured Torque Converters



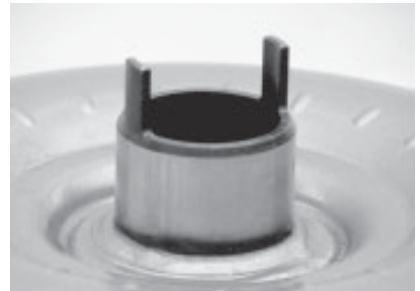
## Photo Ref.

- 66 Size 11" Daikin  
Hub 2 Flats on Hub  
Pilot .787" OD x .660" L  
Mounting 6 Threaded Holes  
Stator Splines 30  
Turbine Splines 14



**Comment:** Fits J and K series single speed transmissions

- 67 Size 11" Mazda  
Hub 2 Eared Hub  
Pilot .589" OD x .588" L  
Mounting 6 Threaded Holes  
Stator Splines 19  
Turbine Splines 14



**Comment:** Code Letter: M

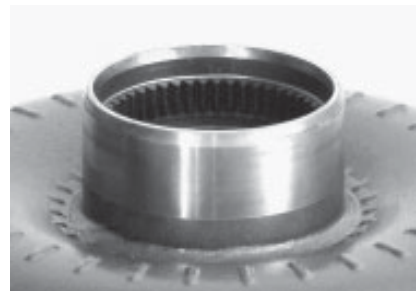
- 68 Size 13" Borg Warner  
Hub Slotted Hub  
Pilot 1.700" OD  
Mounting 6 Mounting Pads  
Stator Splines 24  
Turbine Splines 30



- 69 Size 11" Komatsu  
Hub 2 Flats on Hub  
Pilot Removable type  
Mounting 8 Threaded Holes  
Stator Splines 30  
Turbine Splines 14



- 70 Size 11.5" Sachs  
Hub Smooth Hub W/50 Splines in I.D.  
Pilot .787" & 1.300" OD  
Mounting 4 Mounting Nuts  
Stator Splines 29  
Turbine Splines 29



**Comment:** 215001 or 215002 stamped on bottom cover -  
154000 or 154001 stamped on impeller cover

New Torque Converters may be available. Contact your JI Rep. for price & availability.

Photo Reference Section is for use in identification of Converters and does not imply that Converters with similar Reference Numbers are identical.

**Toll Free USA & Canada: 800-321-9983, Mexico: 001-800-561-1897 Fax: 330/342-3895 [www.joseph.com](http://www.joseph.com)**

All manufacturers' names, numbers, symbols and descriptions are used for reference purpose only,  
and it is not implied that any part listed is the product of the manufacturer.

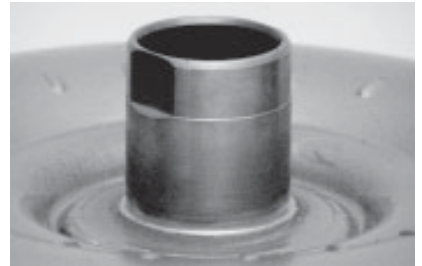
**Photo Ref.**

**71** Size 11" Daikin  
 Hub 2 Eared Hub  
 Pilot .589" OD x .600" L  
 Mounting 8 Threaded Holes  
 Stator Splines 18  
 Turbine Splines 14



**Comment:** No dowel pins at drive plate mounting

**72** Size 11" Daikin  
 Hub 2 Flats on Hub  
 Pilot .787" OD x .660" L  
 Mounting 6 Threaded Holes  
 Stator Splines 30  
 Turbine Splines 14 or 18



**Comment:** 14 turbine Splines fit J & K Series 2 speed Daikin; 18 turbine Splines fit single speed models HO2 series or 2 Speed HO2 Series Daikin

**73** Size 11" Daikin  
 Hub 2 Eared Hub  
 Pilot .589" OD x .580" L - OR  
 - .589" OD x .610" L  
 Mounting 8 Threaded Holes  
 Stator Splines 18  
 Turbine Splines 14



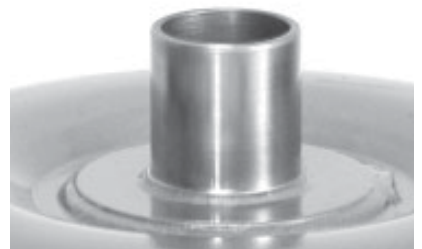
**Comment:** Can have 2 dowel pins or 0 dowel pins at drive plate mounting; cooling fins.

**74** Size 13" Daikin  
 Hub Geared Hub  
 Pilot .787" OD x 1.50" L - OR  
 - .984" OD x 1.10" L  
 Mounting 6 Threaded Holes  
 Stator Splines 18  
 Turbine Splines 19



**Comment:** .787" Pilot fits early FO5 series trucks; .984" Pilot has 2 dowel pins at drive plate mounting

**75** Size N/A  
 Hub N/A  
 Pilot 2.038" OD x 1.07" L  
 Mounting 8 Threaded Holes  
 Stator Splines 32  
 Turbine Splines 15



**Comment:** N13044 DOZ stamped on top

New Torque Converters may be available. Contact your JI Rep. for price & availability.

Photo Reference Section is for use in identification of Converters and does not imply that Converters with similar Reference Numbers are identical.

**Toll Free USA & Canada: 800-321-9983, Mexico: 001-800-561-1897 Fax: 330/342-3895 [www.joseph.com](http://www.joseph.com)**

All manufacturers' names, numbers, symbols and descriptions are used for reference purpose only, and it is not implied that any part listed is the product of the manufacturer.

Copyright 2005, Joseph Industries, Inc.

# Remanufactured Torque Converters



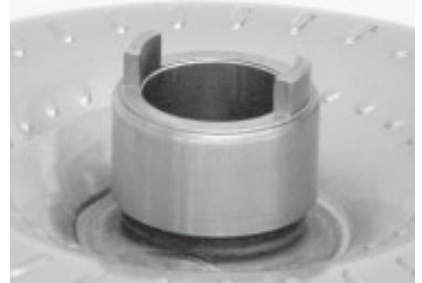
## Photo Ref.

- 76 Size 13" Daikin  
Hub Geared Hub  
Pilot .982" OD  
Mounting 6 Threaded Holes  
Stator Splines 27  
Turbine Splines 19



**Comment:** 4 dowel pins at drive plate mounting

- 77 Size 11.5" Sachs  
Hub 2 Eared Hub  
Pilot .750" OD  
Mounting 6 Hole Ring  
Stator Splines 15  
Turbine Splines 19



**Comment:** 123301 stamped on bottom cover - 128400 stamped on impeller cover

- 78 Size 13" Daikin  
Hub 2 Eared Hub  
Pilot .787" OD x 1.50" L  
Mounting 6 Threaded Holes  
Stator Splines 18  
Turbine Splines 19



**Comment:** Fits early style F03 series pneumatic tire truck; 2 dowel pins at drive plate mounting.

- 79 Size 13" Komatsu  
Hub 2 Eared Hub  
Pilot Removable type  
Mounting 6 Threaded Holes  
Stator Splines 18  
Turbine Splines 19



- 80 Size 13" Daikin  
Hub Geared Hub  
Pilot .982" OD x 1.10" L  
Mounting 6 Threaded Holes  
Stator Splines 27  
Turbine Splines 19



**Comment:** 2 dowel pins at drive plate mounting

New Torque Converters may be available. Contact your JI Rep. for price & availability.

Photo Reference Section is for use in identification of Converters and does not imply that Converters with similar Reference Numbers are identical.

**Toll Free USA & Canada: 800-321-9983, Mexico: 001-800-561-1897 Fax: 330/342-3895 [www.joseph.com](http://www.joseph.com)**

All manufacturers' names, numbers, symbols and descriptions are used for reference purpose only, and it is not implied that any part listed is the product of the manufacturer.

**Photo Ref.**

- 81** Size 12" Sachs  
 Hub Smooth Hub W/Seal Ring Groove  
 Pilot 1.177" OD x 1.19"  
 Mounting 4 Mounting Pads  
 Stator Splines 22  
 Turbine Splines 18



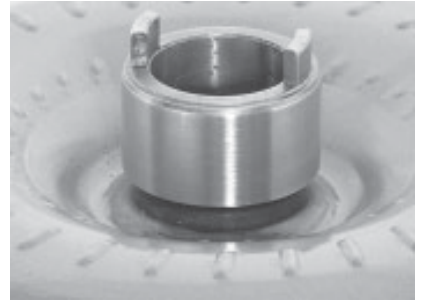
**Comment:** 046405 stamped on bottom cover - 046407 stamped on impeller cover

- 82** Size 13" Borg Warner  
 Hub Smooth Hub W/50 Splines in I.D.  
 Pilot .787" OD x .460" L  
 Mounting 3 Mounting Pads  
 Stator Splines 29  
 Turbine Splines 29



**Comment:** Specify color code.

- 83** Size 11.5" Sachs  
 Hub 2 Eared Hub  
 Pilot .750" OD  
 Mounting 6 Hole Ring  
 Stator Splines 15  
 Turbine Splines 19



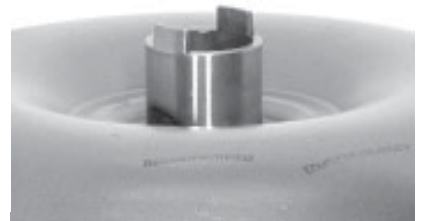
**Comment:** 123401 stamped on bottom cover - 128500 stamped on impeller cover

- 84** Size 11" Sachs  
 Hub Smooth Hub W/50 Splines in I.D.  
 Pilot .787" OD & 1.3" OD  
 Mounting 4 Round Nuts  
 Stator Splines 29  
 Turbine Splines 29



**Comment:** 831233 stamped on impeller cover

- 85** Ford  
 Hub 2 Eared Hub  
 Pilot 1.572" OD  
 Mounting 4 Studs  
 Stator Splines 29  
 Turbine Splines 29



**Comment:**

New Torque Converters may be available. Contact your JI Rep. for price & availability.

Photo Reference Section is for use in identification of Converters and does not imply that Converters with similar Reference Numbers are identical.

**Toll Free USA & Canada: 800-321-9983, Mexico: 001-800-561-1897 Fax: 330/342-3895 [www.joseph.com](http://www.joseph.com)**

All manufacturers' names, numbers, symbols and descriptions are used for reference purpose only,  
 and it is not implied that any part listed is the product of the manufacturer.

Copyright 2005, Joseph Industries, Inc.



# Remanufactured Torque Converters



## Photo Ref.

- 86 Size 11" Borg Warner  
Hub Splined Hub  
Pilot .787" OD  
Mounting 4 Square Nuts  
Stator Splines 19  
Turbine Splines 20



**Comment:** Code Letters: TM

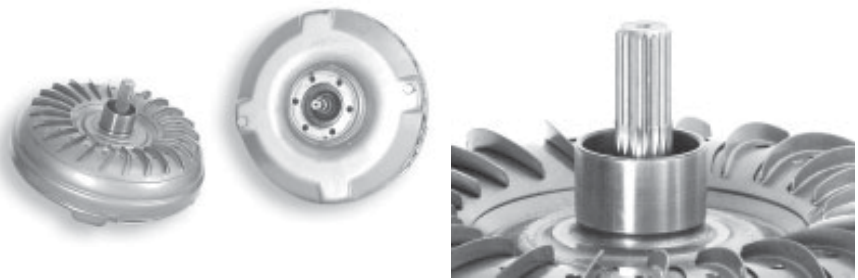
- 87 Size 11" Sachs  
Hub Smooth Hub  
Pilot 1.812" OD  
Mounting 4 Mounting Pads  
Stator Splines 38  
Turbine Splines 27



- 88 Size 11" Mazda  
Hub 2 Flats on Hub  
Pilot .589" OD x .895" L  
Mounting 6 Threaded Holes  
Stator Splines 32  
Turbine Splines 18



- 88 Size 11" Mazda  
Hub Smooth Hub  
Pilot .589" OD x .895" L  
Mounting 6 Threaded Holes  
Stator Splines 32  
Turbine Splines 20



- 90 Size 11" Toyota  
Hub 4 Eared Hub  
Pilot .589" OD x 1" L  
Mounting 6 Threaded Holes  
Stator Splines 10  
Turbine Splines 18



**Comment:** Hub has seal ring groove. Fits some Komatsu and Kalmar models

New Torque Converters may be available. Contact your JI Rep. for price & availability.

Photo Reference Section is for use in identification of Converters and does not imply that Converters with similar Reference Numbers are identical.

**Toll Free USA & Canada: 800-321-9983, Mexico: 001-800-561-1897 Fax: 330/342-3895 [www.joseph.com](http://www.joseph.com)**

All manufacturers' names, numbers, symbols and descriptions are used for reference purpose only,  
and it is not implied that any part listed is the product of the manufacturer.

**Photo Ref.**

- 91** Size 11" Mitsubishi  
 Hub 2 Flats on hub  
 Pilot .589" OD x .600 L  
 Mounting 8 Threaded Holes  
 Stator Splines 30  
 Turbine Splines 14



**Comment:** 019274 on side of top

- 92** Size 13" Daikin  
 Hub Geared Hub  
 Pilot .589" OD x 1.550 L  
 Mounting 8 Threaded Holes  
 Stator Splines 31  
 Turbine Splines 20



**Comment:** 7202 stamped on side of bottom

- 93** Size 11 3/4" or 12"  
 Hub 2 Eared Hub  
 Pilot  
 Mounting  
 Stator Splines  
 Turbine Splines 17 or 29



**Comment:** May also have splined hub

- 94** Size 11" Mazda  
 Hub 2 Eared Hub  
 Pilot .589" OD x .600 L  
 Mounting 4 Threaded Holes  
 Stator Splines 19  
 Turbine Splines 20



**Comment:**

- 95** Size 11" Toyota  
 Hub 2 Flats on Hub  
 Pilot 1.257" OD x .70 L  
 Mounting 6 Threaded Holes  
 Stator Splines 30  
 Turbine Splines 14



**Comment:** Used in 5 Series Toyota 1 ton models

New Torque Converters may be available. Contact your JI Rep. for price & availability.

Photo Reference Section is for use in identification of Converters and does not imply that Converters with similar Reference Numbers are identical.

**Toll Free USA & Canada: 800-321-9983, Mexico: 001-800-561-1897 Fax: 330/342-3895 [www.joseph.com](http://www.joseph.com)**

All manufacturers' names, numbers, symbols and descriptions are used for reference purpose only,  
 and it is not implied that any part listed is the product of the manufacturer.

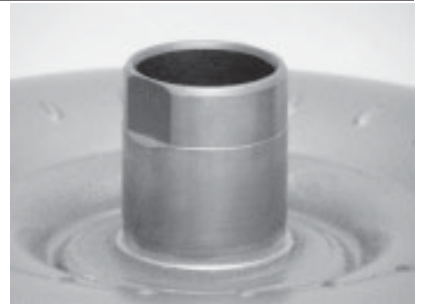
Copyright 2005, Joseph Industries, Inc.

# Remanufactured Torque Converters



## Photo Ref.

- 96 Size 12" Mazda  
Hub 2 Flats on Hub  
Pilot .589" OD x .625 L  
Mounting 8 Threaded Holes  
Stator Splines 16  
Turbine Splines 19



**Comment:**

- 97 Size 10.5" Mazda  
Hub 2 Flats on Hub  
Pilot .668" OD x .60 L  
Mounting 6 Threaded Holes  
Stator Splines 30  
Turbine Splines 14



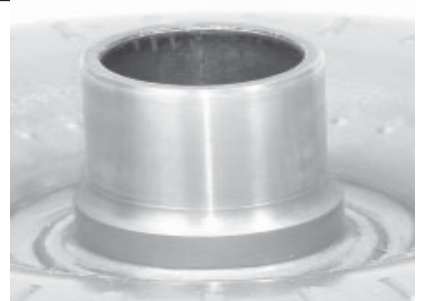
**Comment:** Mounting holes spaced at 65 - 55 - 65 - 55 degree intervals

- 98 Size 11" Toyota  
Hub 4 Eared Hub  
Pilot 1.257" OD  
Mounting 6 Threaded Nuts  
Stator Splines 10  
Turbine Splines 18



**Comment:** Hub has seal ring groove.

- 99 Size Fitchel & Sachs  
Hub  
Pilot 1.375" OD  
Mounting 4 Tabs  
Stator Splines 19  
Turbine Splines 17



**Comment:** 065001 stamped on bottom.

- 100 Size 13" Daikin  
Hub Geared Hub  
Pilot Removable Type  
Mounting 6 Threaded Holes  
Stator Splines 18  
Turbine Splines 19



**Comment:** Fits late F05 Series Trucks

New Torque Converters may be available. Contact your JI Rep. for price & availability.

Photo Reference Section is for use in identification of Converters and does not imply that Converters with similar Reference Numbers are identical.

**Toll Free USA & Canada: 800-321-9983, Mexico: 001-800-561-1897 Fax: 330/342-3895 [www.joseph.com](http://www.joseph.com)**

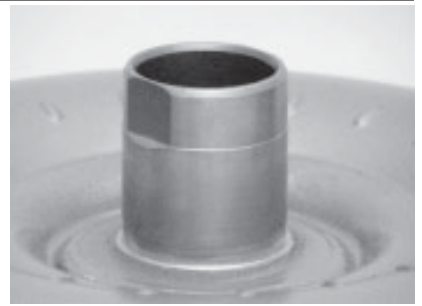
All manufacturers' names, numbers, symbols and descriptions are used for reference purpose only, and it is not implied that any part listed is the product of the manufacturer.

Copyright 2005, Joseph Industries, Inc.

**Photo Ref.**

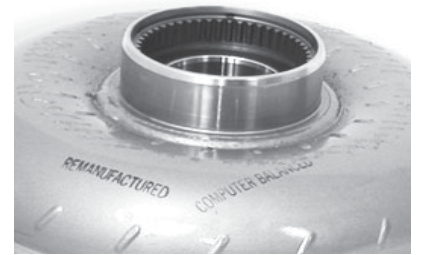
**101** Mitsubishi  
 Hub 2 Flats on Hub  
 Pilot .589" OD x .615 L  
 Mounting 6 Threaded Holes  
 Stator Splines 30  
 Turbine Splines 14

**Comment:** CO stamped on top.



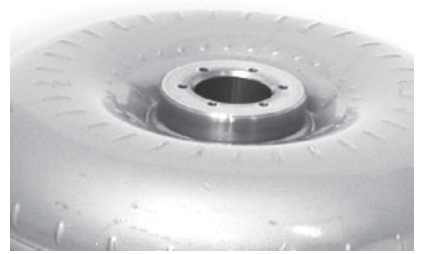
**102** Size 11" Exedy  
 Hub 3.75" OD with 50 Splines on ID  
 Pilot .787" OD x .475 L or 1.30" OD x .540 L  
 Mounting 4 Round Nuts  
 Stator Splines 29  
 Turbine Splines 29

**Comment:** OY1376 on side of bottom.



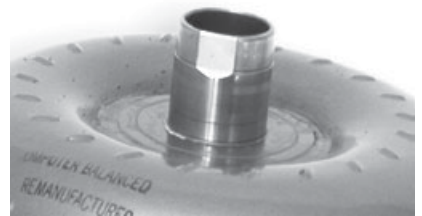
**103** Size 11 1/2" Sachs  
 Hub Flange for Removable Geared Hub  
 Pilot .750" OD x .750 L  
 Mounting 6 Nuts  
 Stator Splines 29  
 Turbine Splines 29

**Comment:** Top Stamped 186000 Bottom Stamped 318001



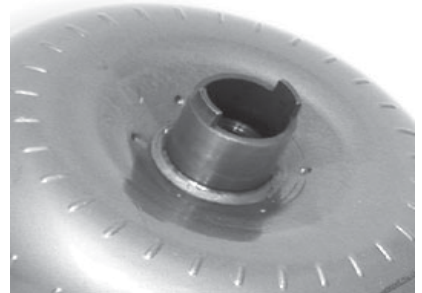
**104** Size 10 1/2" Yale  
 Hub 2 Flats on Hub  
 Pilot .787" OD x .450 L  
 Mounting 4 Pads  
 Stator Splines 30  
 Turbine Splines 14

**Comment:** 1 brown stripe on top. 1 white stripe on bottom.



**105** Borg Warner  
 Hub 2 Eared Hub  
 Pilot .750" OD  
 Mounting 4 Studs  
 Stator Splines  
 Turbine Splines 22

**Comment:**



New Torque Converters may be available. Contact your JI Rep. for price & availability.

Photo Reference Section is for use in identification of Converters and does not imply that Converters with similar Reference Numbers are identical.

**Toll Free USA & Canada: 800-321-9983, Mexico: 001-800-561-1897 Fax: 330/342-3895 [www.joseph.com](http://www.joseph.com)**

All manufacturers' names, numbers, symbols and descriptions are used for reference purpose only,  
 and it is not implied that any part listed is the product of the manufacturer.

Copyright 2005, Joseph Industries, Inc.

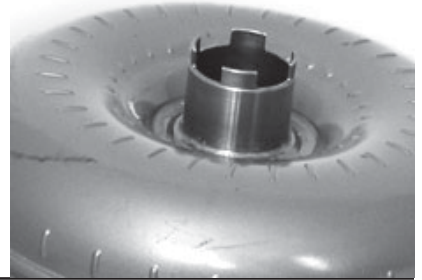
# Remanufactured Torque Converters



## Photo Ref.

106

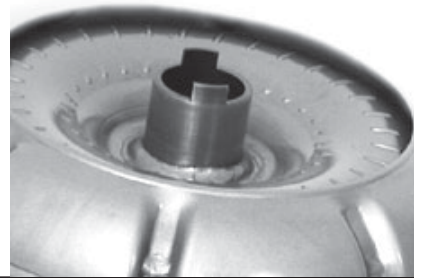
Hub 4 Eared Thin Hub  
Pilot .750" OD  
Mounting 6 Mounting Straps  
Stator Splines 19  
Turbine Splines 19



**Comment:** Code Letters: CE, EA, DE, OE, BF, DF, ED, FH

107

Hub 2 Eared Hub  
Pilot .750" OD  
Mounting 6 Mounting Nuts  
Stator Splines 29  
Turbine Splines 17



**Comment:** Code Letters: NH, JC, JV. With cooling shroud.

108 Size 11"

Hub 2 Eared Hub  
Pilot .589" OD x .920 L  
Mounting 6 Threaded Holes  
Stator Splines 19  
Turbine Splines 18



**Comment:**

109 Size 11" Toyota

Hub 4 Eared Hub  
Pilot 1.257" OD x .560 L  
Mounting 6 oblong nuts  
Stator Splines 10  
Turbine Splines 18



**Comment:**

110 Size 14 1/2" Fitchel & Sachs

Hub Smooth Hub with Seal Ring Groove  
Pilot 2.358" OD with 25 splines on bottom  
Mounting 25 Spline Pilot  
Stator Splines 46  
Turbine Splines 30



**Comment:** 135007 on bottom

New Torque Converters may be available. Contact your JI Rep. for price & availability.

Photo Reference Section is for use in identification of Converters and does not imply that Converters with similar Reference Numbers are identical.

**Toll Free USA & Canada: 800-321-9983, Mexico: 001-800-561-1897 Fax: 330/342-3895 [www.joseph.com](http://www.joseph.com)**

All manufacturers' names, numbers, symbols and descriptions are used for reference purpose only, and it is not implied that any part listed is the product of the manufacturer.

**Photo Ref.**

**111** Size Fitchel & Sachs  
 Hub Smooth Hub with 46 Splines in ID  
 Pilot 1.375 OD  
 Mounting 4 Mounting Pads  
 Stator Splines 19  
 Turbine Splines 29



**Comment:**

**112** Size 13" Daikin Exedy  
 Hub 2 Flats on Hub  
 Pilot 2.439" OD x 2.160 L  
 Mounting 8 Threaded Holes  
 Stator Splines Top 31 Bottom 20  
 Turbine Splines 20



**Comment:**

**113** Size 13" Daikin  
 Hub 2 Eared Hub  
 Pilot 2.950" OD x 1.677 L  
 Mounting 6 threaded holes  
 Stator Splines 18  
 Turbine Splines 19



**Comment:** D with four digits

**114** Size  
 Hub  
 Pilot  
 Mounting  
 Stator Splines  
 Turbine Splines



**Comment:**

**115** Size  
 Hub 2 Eared Hub  
 Pilot  
 Mounting  
 Stator Splines  
 Turbine Splines 16



**Comment:**

New Torque Converters may be available. Contact your JI Rep. for price & availability.

Photo Reference Section is for use in identification of Converters and does not imply that Converters with similar Reference Numbers are identical.

**Toll Free USA & Canada: 800-321-9983, Mexico: 001-800-561-1897 Fax: 330/342-3895 [www.joseph.com](http://www.joseph.com)**

All manufacturers' names, numbers, symbols and descriptions are used for reference purpose only,  
 and it is not implied that any part listed is the product of the manufacturer.

Copyright 2005, Joseph Industries, Inc.

# Remanufactured Torque Converters



## Photo Ref.

116 Size  
Hub 2 Eared Hub  
Pilot  
Mounting  
Stator Splines  
Turbine Splines



Comment:

117 Size  
Hub 2 Eared Hub  
Pilot  
Mounting  
Stator Splines  
Turbine Splines



Comment:

118 Size 12 1/2" Mitsubishi  
Hub N/A  
Pilot .787" OD x .60 L  
Mounting 10 Threaded Holes  
Stator Splines 18  
Turbine Splines 16



Comment: Color Code: One white spot on bottom. DM100000 on bottom.

119 Size 14 1/2" Sachs  
Hub N/A  
Pilot 1.573" OD x 1.031 L  
Mounting 4 Mounting Pads  
Stator Splines 46  
Turbine Splines 30



Comment: Color Code: One red spot on top.

120 Size 11 1/2" Borg Warner  
Hub N/A  
Pilot .787" OD x .750 L  
Mounting 4 Mounting Nuts  
Stator Splines 19  
Turbine Splines 20



Comment: 2816242 stamped on bottom.

New Torque Converters may be available. Contact your JI Rep. for price & availability.

Photo Reference Section is for use in identification of Converters and does not imply that Converters with similar Reference Numbers are identical.

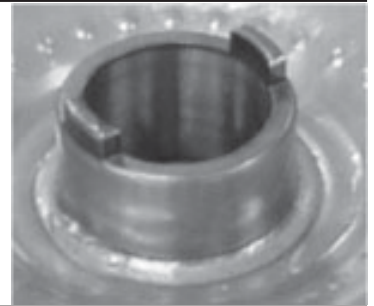
**Toll Free USA & Canada: 800-321-9983, Mexico: 001-800-561-1897 Fax: 330/342-3895 [www.joseph.com](http://www.joseph.com)**

All manufacturers' names, numbers, symbols and descriptions are used for reference purpose only,  
and it is not implied that any part listed is the product of the manufacturer.

Copyright 2005, Joseph Industries, Inc.

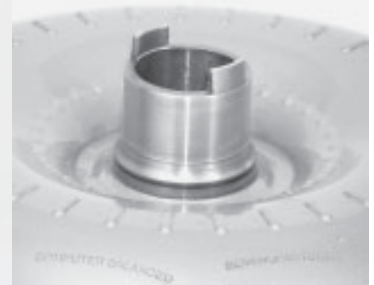
**Photo Ref.**

**121** Size 11" Fitchel & Sachs  
 Hub 2 Eared Hub  
 Pilot 1.180" OD x .450 L  
 Mounting 7.160 welded ring with 6 Holes  
 Stator Splines 28  
 Turbine Splines 26



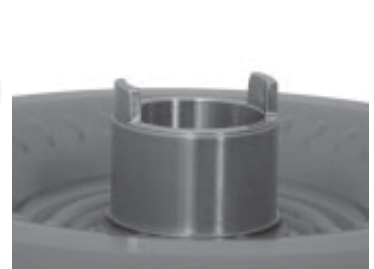
**Comment:** 175000, 175001 or 175002 on top. 283001, 283002 or 283003 on bottom.

**122** Size Fitchel & Sachs  
 Hub 2 Eared Hub  
 Pilot .787" OD  
 Mounting 4 Mounting Pads  
 Stator Splines 29  
 Turbine Splines 29



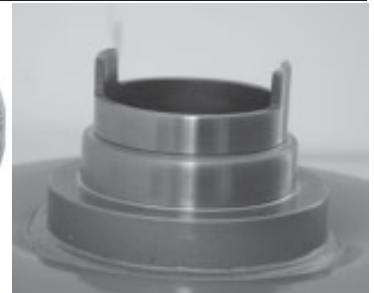
**Comment:** 063001 Stamped on Bottom

**123** Size 13"  
 Hub 2 Eared Hub  
 Pilot 1.702" OD x .600 L  
 Mounting 3 Oblong Pads  
 Stator Splines 21  
 Turbine Splines 19



**Comment:** Color Code: 1 blue and 1 black dot / stripe.

**124** Size 11" Komatsu  
 Hub 2 Eared Hub  
 Pilot N/A Removable Input Guide  
 Mounting 8 Threaded Holes 4 Dowel Pins  
 Stator Splines 22  
 Turbine Splines 18



**Comment:**

**125** Size 11" TCM  
 Hub 2 Eared Hub  
 Pilot .589" OD x .675 L  
 Mounting 6 Threaded Holes  
 Stator Splines 30  
 Turbine Splines 14



**Comment:** OY and four digits stamped around the side along the weld.

New Torque Converters may be available. Contact your JI Rep. for price & availability.

Photo Reference Section is for use in identification of Converters and does not imply that Converters with similar Reference Numbers are identical.

**Toll Free USA & Canada: 800-321-9983, Mexico: 001-800-561-1897 Fax: 330/342-3895 [www.joseph.com](http://www.joseph.com)**

All manufacturers' names, numbers, symbols and descriptions are used for reference purpose only,  
 and it is not implied that any part listed is the product of the manufacturer.

Copyright 2005, Joseph Industries, Inc.



# Remanufactured Torque Converters



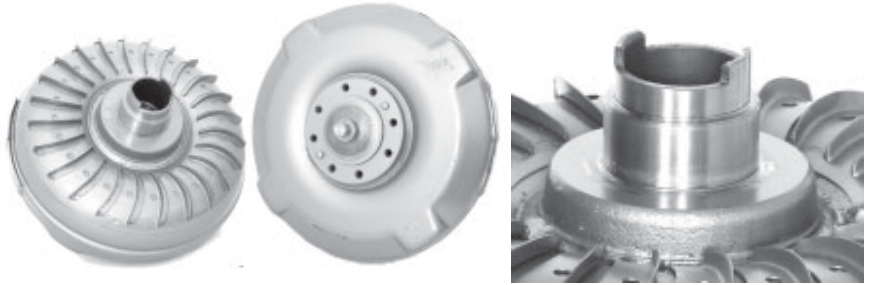
## Photo Ref.

126 Size 11" Mitsubishi  
Hub 2 Flats on Hub  
Pilot .589" OD x .600 L  
Mounting 8 Threaded Holes  
Stator Splines 30  
Turbine Splines 14



Comment:

127 Size 11" Mitsubishi  
Hub 2 Eared Hub  
Pilot .589" OD x .580 L  
Mounting 8 Threaded Holes 2 Dowel Pins  
Stator Splines 18  
Turbine Splines 14



Comment: D with 4 digits.

New Torque Converters may be available. Contact your JI Rep. for price & availability.

Photo Reference Section is for use in identification of Converters and does not imply that Converters with similar Reference Numbers are identical.

**Toll Free USA & Canada: 800-321-9983, Mexico: 001-800-561-1897 Fax: 330/342-3895 [www.joseph.com](http://www.joseph.com)**

All manufacturers' names, numbers, symbols and descriptions are used for reference purpose only, and it is not implied that any part listed is the product of the manufacturer.