



Employee Owned • Customer Driven • Quality Focused

***Remanufactured Engines
Remanufactured Transmissions
Remanufactured Torque Converters
and Aftermarket Parts for***

- Material Handling
- Construction Equipment
- Agricultural Equipment

Who is Joseph Industries

Joseph Industries began in the remanufacturing of automotive transmissions and torque converters in 1945 on the Eastside of Cleveland, Ohio. Ultimately, Joseph Industries developed into the niche market of driveline components for applications in the Material Handling, Construction and Agricultural industries. In 1987, 100% ownership of Joseph Industries transferred to the employees through an Employee Stock Ownership Plan (ESOP) from a retiring founder. Today, through several years of successful growth and expansion, the company operates from a 75,000 square foot facility headquartered in Streetsboro Ohio. Therefore, it is with great pride that Joseph Industries for over 60 years remains the largest remanufacturer of industrial driveline components in North America and the remanufacturer of choice for several Original Equipment Manufacturers.

Our Mission Statement

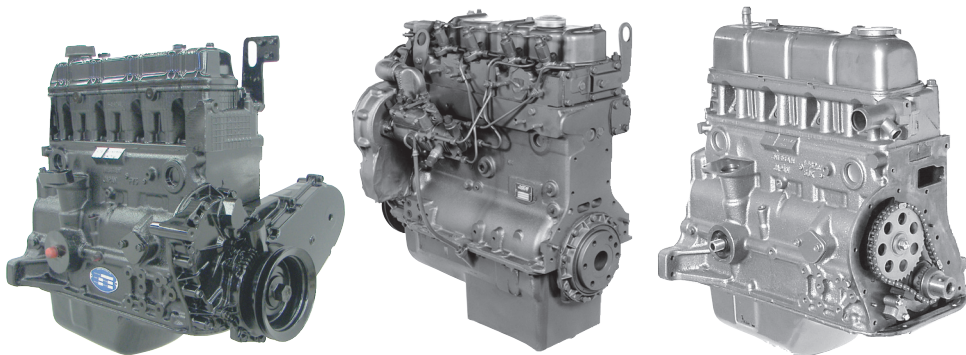
By focusing on industrial driveline components including remanufactured transmissions, torque converters and engines, we help you extend the life of your material handling, construction and agricultural equipment. Our goal is to meet your expectations in a friendly and timely manner with products and services that live up to their reputation for “Extending the Life” of your equipment. We’ll strive to anticipate your future needs by increasing our repertoire of products and their applications. We value successful, long-term partnerships with our customers, suppliers and employees. We will continuously improve our products, processes and people in order to keep the hard-earned reputation as the “Driveline Experts”.



Remanufactured Engines

Joseph Industries remanufactured engines are assembled by ASE certified technicians who adhere to rigorous quality control standards during every step of the inspection, machining, assembly and testing processes. Each engine is thoroughly tested for proper performance, including compression, vacuum, oil pressure, low noise and to be free of fluid leaks. All diesel engines are also supplied complete with a remanufactured fuel system and “hot run” tested to verify injector, fuel pump and governor settings

- Pistons - New pistons are always installed and checked for equal weight to assure proper engine balance.
- Rods - Connecting Rods are remanufactured to equal weights and tolerances to maintain proper engine balance.
- Crankshafts - All journals are precision ground and polished to OEM specifications.
- Valves - New valve guides, seals and springs are installed. Valves and seats are reground or replaced.
- Cylinder Heads – Are completely reconditioned, resurfaced and tested for cracks.
- Cylinders - Are aligned, bored and honed to final size insuring proper piston and ring fit.
- Camshafts - Are reconditioned, reground or replaced.
- Lifters - All valve lifters are reconditioned, reground or replaced.

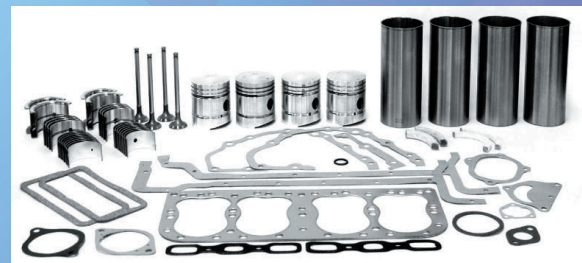


Remanufacture and Return (R&R) or Exchange Engine services

Maintaining your original equipment is easy by considering Joseph Industries remanufacture and return (R&R) service. Send us your original engine core and we will remanufacture it according to our stringent guidelines then return it to you promptly. We also offer from stock popular models of remanufactured and new engines ready for quick delivery. Either way, these services help reduce downtime and save you from the expense of keeping inventory on hand. These options limit your shop's warranty exposure as every engine offered by Joseph Industries is backed by our 12 month, unlimited hour, limited warranty.

Engine Overhaul Kits

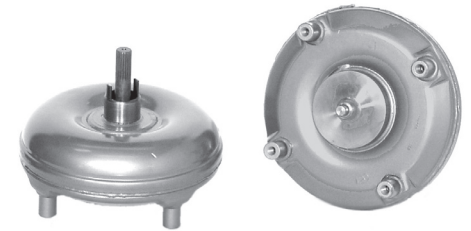
Overhaul kits by Joseph Industries are available for those customers who choose to rebuild their own engine. These kits are engineered to meet or exceed OEM specifications and are the same high quality components and parts used in our own engine remanufacturing process. Standard overhaul kits are available or can be custom tailored to fit your specific application needs.



JOSEPH
INDUSTRIES, INC.



Remanufactured Torque Converters



As a key component of any driveline system, the torque converter transmits all of the power and torque of the engine to the transmission. Because the torque converter shares the same fluid with the transmission, it will always be our recommendation to remanufacture or replace it anytime the transmission is remanufactured, rebuilt or replaced. This practice avoids contamination of a fresh transmission or torque converter.

In a used torque converter, there is always some degree of contamination present and, if it is just reused, that contamination will find its way into the transmission through the oil lines and will likely cause another transmission failure. Metal and clutch lining particles may be trapped inside the converter and cannot be removed by simply draining the unit. Therefore, a torque converter must be disassembled and remanufactured in order for it to be cleaned properly.

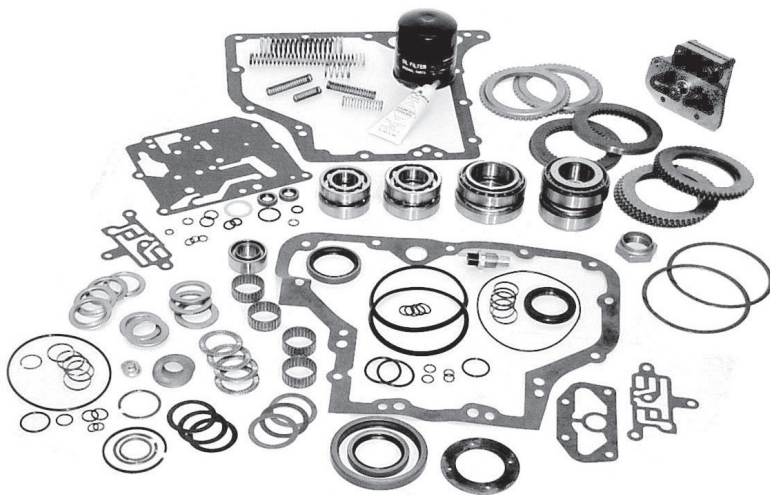
Trust that every Joseph Industries remanufactured torque converter is completely disassembled, thoroughly cleaned and carefully checked for imperfections prior to reassembly. All converter wear components are replaced and the unit is reassembled according to original OEM specifications using state of the art equipment. Each of our remanufactured torque converters is Hydro-tested, measured and computer balanced to within 5 grams or less. Joseph Industries remanufactured torque converters are backed by our 12 month, unlimited hour, limited warranty.

Remanufacture and Return (R&R) or Exchange Torque Converter services

Maintaining your original equipment is easy by considering Joseph Industries remanufacture and return (R&R) service. Send us your original torque converter core and we will remanufacture it according to our stringent guidelines then return it to you promptly. We also offer from stock popular models of remanufactured and new torque converters ready for quick delivery. Either way, these services help reduce downtime and save you from the expense of keeping inventory on hand. These options limit your shop's warranty exposure as every torque converter offered by Joseph Industries is backed by our 12 month, unlimited hour, limited warranty.

Remanufactured Transmissions

Joseph Industries remanufactured transmissions include only the highest quality replacement parts available meeting or exceeding OEM specifications. Every “hard part” component considered for reuse, has been thoroughly inspected to be free of damage and checked for wear to insure they remain within OEM specifications and tolerances. Normal wear part items such as clutches, bearings, seals, sealing rings, gaskets and O-rings are ALWAYS replaced. All major components such as clutch packs, pump, and control valves are carefully inspected and individually tested to assure proper operation before considered for reuse. Cleanliness is a primary concern during the reassembly process where every part is kept clean and free of any contaminants. Thorough performance, pressure, temperature and “Hot Run” run-in testing is a standard procedure for all Joseph Industries remanufactured transmissions. A copy of the final test report is delivered with every Joseph Industries brand remanufactured transmission and is backed by our 12 month, unlimited hour, limited warranty.



Transmissions Overhaul Kits

Overhauling a transmission couldn't be easier when using a Joseph Industries engineered overhaul kit. These kits are made up from the same high quality products used in our own remanufacturing process. Our technician friendly overhaul kits are popular because our individual sub kits are organized and packaged to include everything needed to get the job done. Your margins improve too when considering that our transmission overhaul kits are an average of 10% less than if you were to purchase parts individually. Individual sub kits such as gasket and seal kits, bearing kits, clutch kits, small parts kits and control valve kits are also available from Joseph Industries.

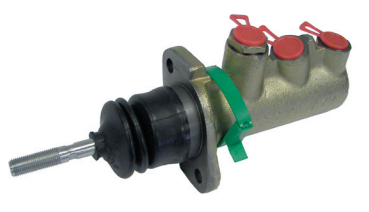
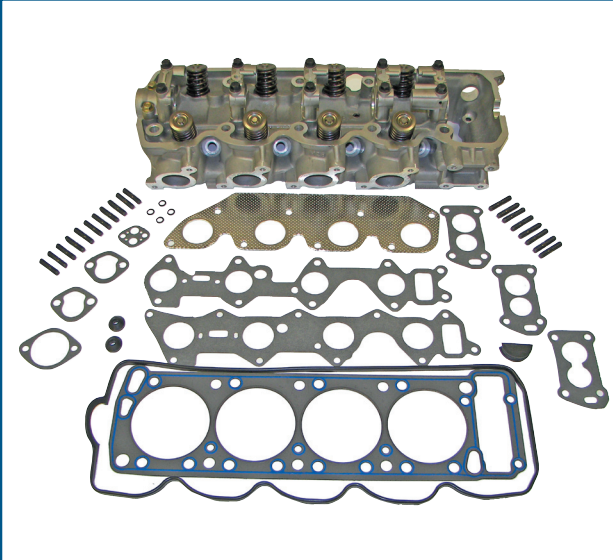
Remanufacture and Return (R&R) or Exchange Transmission services

Maintaining your original equipment is easy by considering Joseph Industries remanufacture and return (R&R) service. Send us your original transmission core and we will remanufacture it according to our stringent guidelines then return it to you promptly. We also offer from stock popular models of remanufactured and new transmissions ready for quick delivery. Either way, these services help reduce downtime and save you from the expense of keeping inventory on hand. These options limit your shop's warranty exposure as every transmission offered by Joseph Industries is backed by our 12 month, unlimited hour, limited warranty.

Parts



Joseph Industries supplies OEM & aftermarket parts for a wide variety of equipment



Joseph Industries remanufactured, new and aftermarket products apply to the following
Material Handling, Construction and
Agricultural OEM Equipment:

> Applications:

AGCO * Allis Chalmers * Baker * Broderson
Borg Warner * Case * Case/IH * Carraro
Caterpillar * Clark * Clark Hurth
Continental * Cummins * Daewoo
Dana-Spicer * David Brown * Deutz
Ford / New Holland * Funk * Gehl * Genie
Hyster * Ingersoll Rand * ITL * JCB *
John Deere * Kalmar/Allis Chalmers
Komatsu * Kubota * Manitou *
Massey Ferguson * Mitsubishi *
Mitsubishi Caterpillar * Nissan * Perkins
Pettibone * Sellick * Taylor * TCM * Terex
Toyota * Volvo * Wiggins * Yale * ZF
and many, many more!

If the brand of equipment you are servicing is not listed, contact our sales department.

We Buy Cores:

- Engines
- Transmissions
- Torque Converters

*Contact our Core
Buyers Group*

Main Location

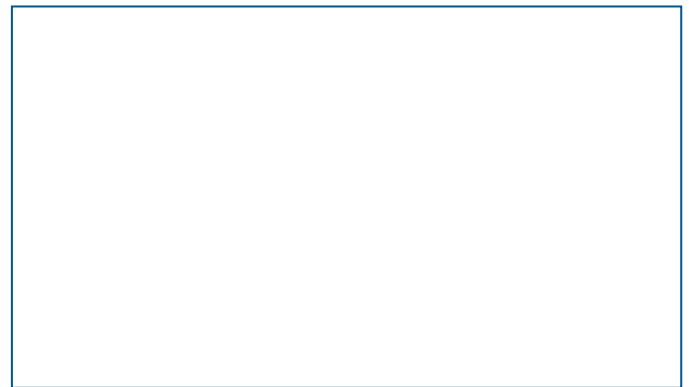
Joseph Industries Inc.
10039 Aurora Hudson Road
Streetsboro, OH, 44241

Sales/Order Dept. - 800-321-9983
Direct dial to specific extension - 888-465-6737 + Ext
Sales Department fax - 330-342-3895
General Office fax - 330-342-3896
www.joseph.com
sales2@joseph.com

***Hours of operation: 8:00 AM until 5:30 PM
Eastern time – Monday through Friday***

Western Warehouse

Joseph Industries Inc.
1620 North Missile Way
Anaheim, CA, 92801
(8:00AM~5PM Mon~Fri Pacific time)



Employee Owned • Customer Driven • Quality Focused